



Datasheet for ABIN6261032
anti-CRH antibody (N-Term)



[Go to Product page](#)

4 Images

Overview

Quantity:	100 µL
Target:	CRH
Binding Specificity:	N-Term
Reactivity:	Human, Rat, Mouse
Host:	Rabbit
Clonality:	Polyclonal
Conjugate:	This CRH antibody is un-conjugated
Application:	Western Blotting (WB), Immunohistochemistry (IHC), ELISA

Product Details

Immunogen:	A synthesized peptide derived from human CRH, corresponding to a region within N-terminal amino acids.
Isotype:	IgG
Specificity:	CRH Antibody detects endogenous levels of total CRH.
Predicted Reactivity:	Pig,Bovine,Sheep,Dog
Purification:	The antiserum was purified by peptide affinity chromatography using SulfoLink™ Coupling Resin (Thermo Fisher Scientific).

Target Details

Target:	CRH
---------	-----

Target Details

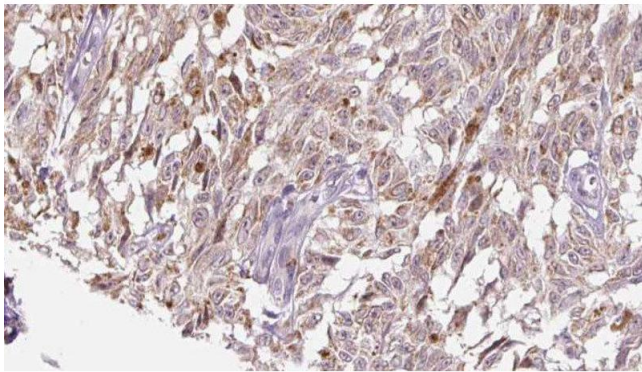
Alternative Name:	CRH (CRH Products)
Background:	Description: Hormone regulating the release of corticotropin from pituitary gland (By similarity). Induces NLRP6 in intestinal epithelial cells, hence may influence gut microbiota profile (By similarity). Gene: CRH
Molecular Weight:	21kDa
Gene ID:	1392
UniProt:	P06850
Pathways:	Positive Regulation of Peptide Hormone Secretion , Hormone Activity , Negative Regulation of Hormone Secretion , cAMP Metabolic Process , Myometrial Relaxation and Contraction , Feeding Behaviour

Application Details

Application Notes:	WB 1:500-1:2000, IHC 1:50-1:200, ELISA(peptide) 1:20000-1:40000
Restrictions:	For Research Use only

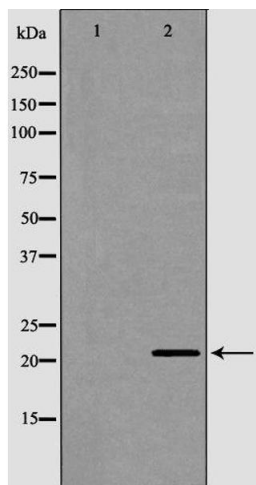
Handling

Format:	Liquid
Concentration:	1 mg/mL
Buffer:	Rabbit IgG in phosphate buffered saline , pH 7.4, 150 mM NaCl, 0.02 % sodium azide and 50 % glycerol.
Preservative:	Sodium azide
Precaution of Use:	This product contains Sodium azide: a POISONOUS AND HAZARDOUS SUBSTANCE which should be handled by trained staff only.
Storage:	-20 °C
Storage Comment:	Store at -20 °C. Stable for 12 months from date of receipt.
Expiry Date:	12 months



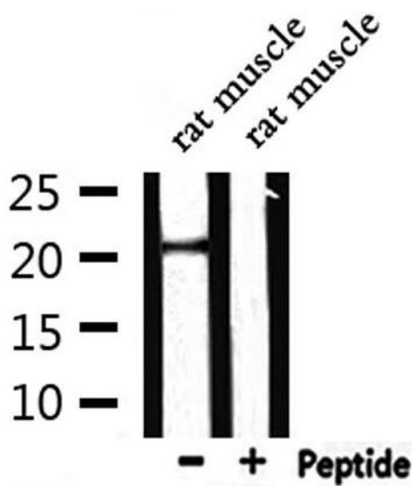
Immunohistochemistry

Image 1. ABIN6276527 at 1/100 staining Human Melanoma tissue by IHC-P. The sample was formaldehyde fixed and a heat mediated antigen retrieval step in citrate buffer was performed. The sample was then blocked and incubated with the antibody for 1.5 hours at 22°C. An HRP conjugated goat anti-rabbit antibody was used as the secondary



Western Blotting

Image 2. Western blot analysis of human brain lysate using CRH antibody. The lane on the left is treated with the antigen-specific peptide.



Western Blotting

Image 3. Western blot analysis of extracts from rat muscle, using CRH Antibody.

Please check the [product details page](#) for more images. Overall 4 images are available for ABIN6261032.