



[Go to Product page](#)

Datasheet for ABIN626106
anti-Ghrelin antibody (AA 1-118)

2 Images

Overview

Quantity:	50 µg
Target:	Ghrelin (GHRL)
Binding Specificity:	AA 1-118
Reactivity:	Human
Host:	Mouse
Clonality:	Monoclonal
Application:	Western Blotting (WB), ELISA, Immunohistochemistry (IHC), Immunohistochemistry (Paraffin-embedded Sections) (IHC (p))

Product Details

Brand:	IHC-plus™
Immunogen:	GHRL (AAH25791, 1 a.a. ~ 118 a.a) full length recombinant protein with GST tag. MW of the GST tag alone is 26 KDa. Type of Immunogen: Recombinant protein
Clone:	2F4
Isotype:	IgG2a kappa
Specificity:	Human GHRL
Purification:	Purified from ascites by Protein A

Target Details

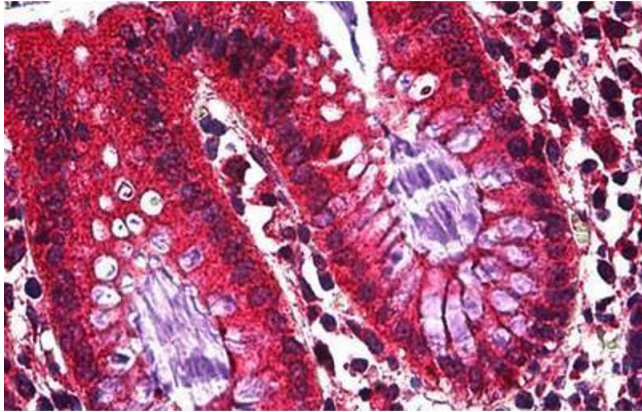
Target:	Ghrelin (GHRL)
Alternative Name:	GHRL / Ghrelin (GHRL Products)
UniProt:	Q9UBU3
Pathways:	Positive Regulation of Peptide Hormone Secretion , Hormone Transport , Peptide Hormone Metabolism , Negative Regulation of Hormone Secretion , Synaptic Membrane , Feeding Behaviour

Application Details

Application Notes:	Approved: ELISA, IHC, IHC-P (5 µg/mL), WB (1:500 - 1:1000) Usage: Immunohistochemistry: Formalin-fixed paraffin-embedded sections. Sandwich ELISA: Recombinant protein. Western Blot: Cell lysate, Recombinant protein.
Comment:	Target Species of Antibody: Human
Restrictions:	For Research Use only

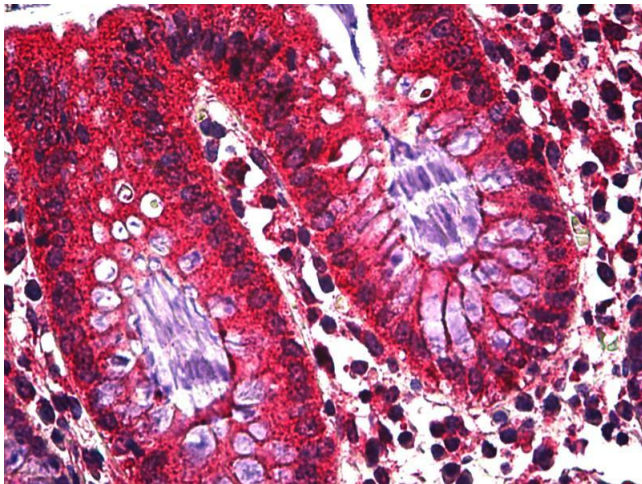
Handling

Format:	Liquid
Concentration:	Lot specific
Buffer:	PBS, pH 7.4.
Handling Advice:	avoid freeze thaw cycles.
Storage:	4 °C, -20 °C
Storage Comment:	Short term 4°C, long term aliquot and store at -20°C, avoid freeze-thaw cycles.



Immunohistochemistry (Formalin-fixed Paraffin-embedded Sections)

Image 1. Human Colon, Epithelium: Formalin-Fixed, Paraffin-Embedded (FFPE)



Immunohistochemistry

Image 2. Anti-Ghrelin antibody IHC of human colon, epithelium. Immunohistochemistry of formalin-fixed, paraffin-embedded tissue after heat-induced antigen retrieval. Antibody concentration 5 ug/ml.