



Datasheet for ABIN6261073  
**anti-CT47A1 antibody**



[Go to Product page](#)

2 Images

Overview

Quantity:	100 µL
Target:	CT47A1
Reactivity:	Human
Host:	Rabbit
Clonality:	Polyclonal
Conjugate:	This CT47A1 antibody is un-conjugated
Application:	ELISA, Western Blotting (WB), Immunohistochemistry (IHC)

Product Details

Immunogen:	A synthesized peptide derived from human CT47A
Isotype:	IgG
Specificity:	CT47A Antibody detects endogenous levels of total CT47A
Cross-Reactivity:	Human
Purification:	The antiserum was purified by peptide affinity chromatography using SulfoLink™ Coupling Resin (Thermo Fisher Scientific).

Target Details

Target:	CT47A1
Alternative Name:	CT47A ( <a href="#">CT47A1 Products</a> )
Background:	Gene: CT47A1, CT47A2, CT47A3, CT47A4, CT47A5, CT47A6, CT47A7, CT47A8, CT47A9,

## Target Details

---

CT47A10, CT47A11, CT47A12

Molecular Weight: 30 kDa

Gene ID: 100, 507, 170

UniProt: [Q5JQC4](#)

## Application Details

---

Application Notes: WB 1:1000-3000 IHC 1:200

Restrictions: For Research Use only

## Handling

---

Format: Liquid

Concentration: 1 mg/mL

Buffer: Rabbit IgG in phosphate buffered saline , pH 7.4, 150 mM NaCl, 0.02 % sodium azide and 50 % glycerol.

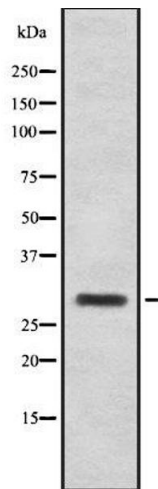
Preservative: Sodium azide

Precaution of Use: This product contains Sodium azide: a POISONOUS AND HAZARDOUS SUBSTANCE which should be handled by trained staff only.

Storage: -20 °C

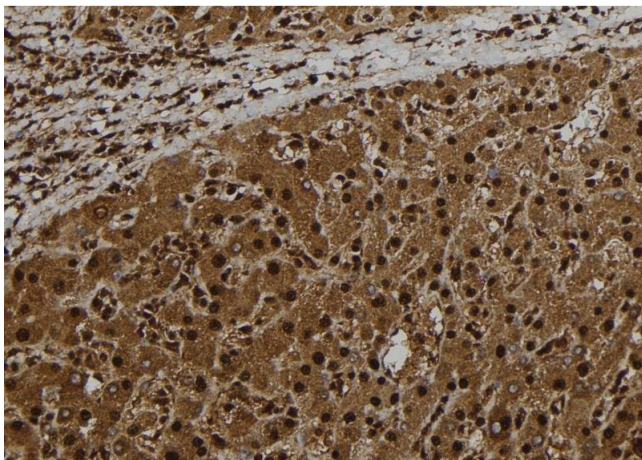
Storage Comment: Store at -20 °C.Stable for 12 months from date of receipt

Expiry Date: 12 months



### Western Blotting

**Image 1.** Western blot analysis of CT47A using HeLa whole cell lysates



### Immunohistochemistry

**Image 2.** ABIN6278751 at 1/100 staining Human liver tissue by IHC-P. The sample was formaldehyde fixed and a heat mediated antigen retrieval step in citrate buffer was performed. The sample was then blocked and incubated with the antibody for 1.5 hours at 22°C. An HRP conjugated goat anti-rabbit antibody was used as the secondary