

Datasheet for ABIN6261098

**anti-CTP Synthase antibody (C-Term)**

3 Images

[Go to Product page](#)

## Overview

|                      |  |
|----------------------|--|
| Quantity:            | 100 µL   |
| Target:              | CTP Synthase (CTPS)  |
| Binding Specificity: | C-Term   |
| Reactivity:          | Human, Mouse, Rat  |
| Host:                | Rabbit   |
| Clonality:           | Polyclonal   |
| Conjugate:           | This CTP Synthase antibody is un-conjugated  |
| Application:         | Western Blotting (WB), ELISA, Immunohistochemistry (IHC), Immunofluorescence (IF), Immunocytochemistry (ICC) |

## Product Details

|                       |   |
|-----------------------|---|
| Immunogen:            | A synthesized peptide derived from human CTPS, corresponding to a region within C-terminal amino acids.                   |
| Isotype:              | IgG   |
| Specificity:          | CTPS Antibody detects endogenous levels of total CTPS.  |
| Predicted Reactivity: | Pig,Zebrafish,Bovine,Horse,Sheep,Rabbit,Dog,Chicken,Xenopus   |
| Purification:         | The antiserum was purified by peptide affinity chromatography using SulfoLink™ Coupling Resin (Thermo Fisher Scientific). |

## Target Details

|         |                     |
|---------|---------------------|
| Target: | CTP Synthase (CTPS) |
|---------|---------------------|

## Target Details

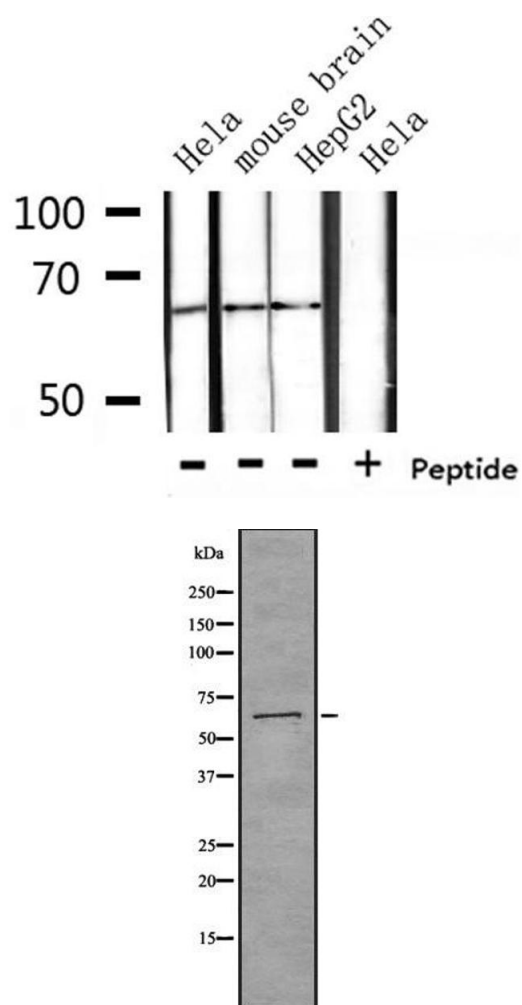
|                   |   |
|-------------------|---|
| Alternative Name: | CTPS1 ( <a href="#">CTPS Products</a> )   |
| Background:       | <p>Description: This enzyme is involved in the de novo synthesis of CTP, a precursor of DNA, RNA and phospholipids. Catalyzes the ATP-dependent amination of UTP to CTP with either L-glutamine or ammonia as a source of nitrogen. This enzyme and its product, CTP, play a crucial role in the proliferation of activated lymphocytes and therefore in immunity.</p> <p>Gene: CTPS1</p> |
| Molecular Weight: | 66 kDa  |
| Gene ID:          | 1503  |
| UniProt:          | <a href="#">P17812</a>  |
| Pathways:         | <a href="#">Proton Transport</a> , <a href="#">Ribonucleoside Biosynthetic Process</a>  |

## Application Details

|                    |   |
|--------------------|---|
| Application Notes: | WB 1:1000-3000, IHC 1:200, IF/ICC 1:100-1:500, ELISA(peptide) 1:20000-1:40000 |
| Restrictions:      | For Research Use only   |

## Handling

|                    |  |
|--------------------|--|
| Format:            | Liquid   |
| Concentration:     | 1 mg/mL  |
| Buffer:            | Rabbit IgG in phosphate buffered saline , pH 7.4, 150 mM NaCl, 0.02 % sodium azide and 50 % glycerol.                  |
| Preservative:      | Sodium azide   |
| Precaution of Use: | This product contains Sodium azide: a POISONOUS AND HAZARDOUS SUBSTANCE which should be handled by trained staff only. |
| Storage:           | -20 °C   |
| Storage Comment:   | Store at -20 °C. Stable for 12 months from date of receipt.  |
| Expiry Date:       | 12 months  |

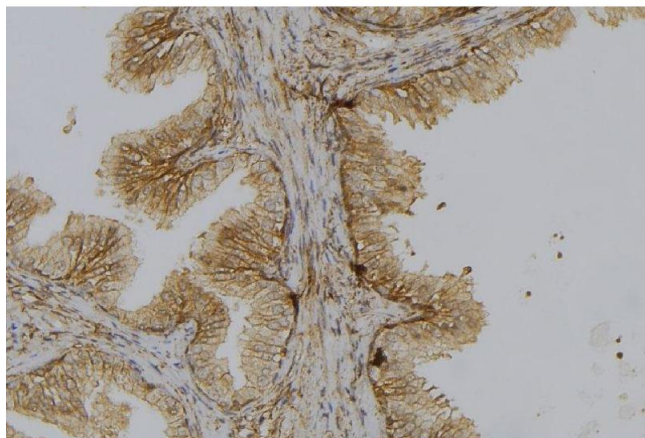


#### Western Blotting

**Image 1.** Western blot analysis of extracts from HeLa, mouse brain, HepG2, using CTPS Antibody.

#### Western Blotting

**Image 2.** Western blot analysis of CTPS using K562 whole cell lysates



#### Immunohistochemistry

**Image 3.** ABIN6278443 at 1/100 staining Mouse colon tissue by IHC-P. The sample was formaldehyde fixed and a heat mediated antigen retrieval step in citrate buffer was performed. The sample was then blocked and incubated with the antibody for 1.5 hours at 22°C. An HRP conjugated goat anti-rabbit antibody was used as the secondary