

Datasheet for ABIN6261115

## anti-Cullin 2 antibody (C-Term)



[Go to Product page](#)

5 Images

1 Publication

### Overview

|                      |  |
|----------------------|--|
| Quantity:            | 100 µL   |
| Target:              | Cullin 2 (CUL2)  |
| Binding Specificity: | C-Term   |
| Reactivity:          | Human, Mouse, Rat  |
| Host:                | Rabbit   |
| Clonality:           | Polyclonal   |
| Conjugate:           | This Cullin 2 antibody is un-conjugated  |
| Application:         | Western Blotting (WB), ELISA, Immunohistochemistry (IHC), Immunofluorescence (IF), Immunocytochemistry (ICC) |

### Product Details

|                       |   |
|-----------------------|---|
| Immunogen:            | A synthesized peptide derived from human Cullin 2, corresponding to a region within C-terminal amino acids.               |
| Isotype:              | IgG   |
| Specificity:          | Cullin 2 Antibody detects endogenous levels of total Cullin 2.  |
| Predicted Reactivity: | Pig,Zebrafish,Bovine,Horse,Sheep,Rabbit,Dog,Chicken,Xenopus   |
| Purification:         | The antiserum was purified by peptide affinity chromatography using SulfoLink™ Coupling Resin (Thermo Fisher Scientific). |

### Target Details

|         |                 |
|---------|-----------------|
| Target: | Cullin 2 (CUL2) |
|---------|-----------------|

## Target Details

|                   |  |
|-------------------|--|
| Alternative Name: | CUL2 ( <a href="#">CUL2 Products</a> )   |
| Background:       | <p>Description: Core component of multiple cullin-RING-based ECS (ElonginB/C-CUL2/5-SOCS-box protein) E3 ubiquitin-protein ligase complexes, which mediate the ubiquitination of target proteins. ECS complexes and ARIH1 collaborate in tandem to mediate ubiquitination of target proteins (PubMed:27565346). May serve as a rigid scaffold in the complex and may contribute to catalysis through positioning of the substrate and the ubiquitin-conjugating enzyme. The E3 ubiquitin-protein ligase activity of the complex is dependent on the neddylation of the cullin subunit and is inhibited by the association of the deneddylated cullin subunit with TIP120A/CAND1. The functional specificity of the ECS complex depends on the substrate recognition component. ECS(VHL) mediates the ubiquitination of hypoxia-inducible factor (HIF).</p> <p>Gene: CUL2</p> |
| Molecular Weight: | 82kDa,84kDa  |
| Gene ID:          | 8453   |
| UniProt:          | <a href="#">Q13617</a>   |
| Pathways:         | <a href="#">M Phase</a> , <a href="#">Asymmetric Protein Localization</a> , <a href="#">SARS-CoV-2 Protein Interactome</a>   |

## Application Details

|                    |  |
|--------------------|--|
| Application Notes: | WB: 1:500-1:3000, IHC: 1:50-1:200, IF/ICC: 1:100-1:500, ELISA(peptide) 1:20000-1:40000 |
| Restrictions:      | For Research Use only  |

## Handling

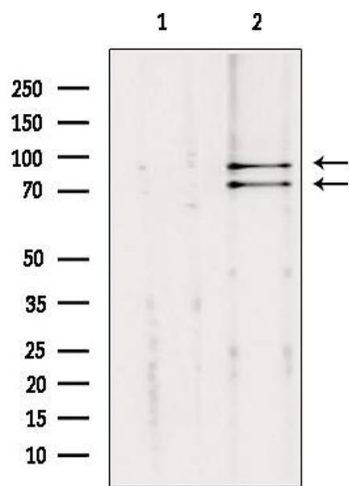
|                    |  |
|--------------------|--|
| Format:            | Liquid   |
| Concentration:     | 1 mg/mL  |
| Buffer:            | Rabbit IgG in phosphate buffered saline , pH 7.4, 150 mM NaCl, 0.02 % sodium azide and 50 % glycerol.                  |
| Preservative:      | Sodium azide   |
| Precaution of Use: | This product contains Sodium azide: a POISONOUS AND HAZARDOUS SUBSTANCE which should be handled by trained staff only. |
| Storage:           | -20 °C   |
| Storage Comment:   | Store at -20 °C. Stable for 12 months from date of receipt.  |

Expiry Date: 12 months

Publications

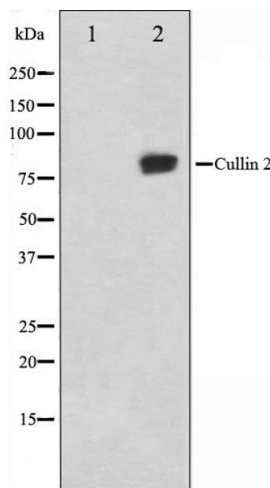
Product cited in: Qian, Zhang, Zhou, Liu, Yue, Guo, Sun, Lv, Chen: "Artesunate enhances  $\gamma\delta$  T-cell-mediated antitumor activity through augmenting  $\gamma\delta$  T-cell function and reversing immune escape of HepG2 cells." in: **Immunopharmacology and immunotoxicology**, Vol. 40, Issue 2, pp. 107-116, (2018) ([PubMed](#)).

Validation report #104221 for Western Blotting (WB)



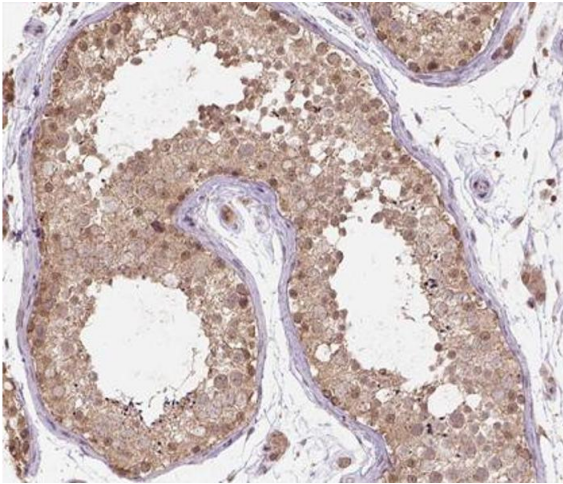
**Western Blotting**

**Image 1.** Western blot analysis of extracts from mouse brain, using Cullin 2 Antibody. Lane 1 was treated with the blocking peptide.



**Western Blotting**

**Image 2.** Western blot analysis on LOVO cell lysate using Cullin 2 Antibody, The lane on the left is treated with the antigen-specific peptide.



#### Immunohistochemistry

**Image 3.** ABIN6266521 at 1/200 staining human testis tissue sections by IHC-P. The tissue was formaldehyde fixed and a heat mediated antigen retrieval step in citrate buffer was performed. The tissue was then blocked and incubated with the antibody for 1.5 hours at 22°C. An HRP conjugated goat anti-rabbit antibody was used as the secondary.

Please check the [product details page](#) for more images. Overall 5 images are available for ABIN6261115.