

Datasheet for ABIN6261116  
**anti-CUX1 antibody (N-Term)**



[Go to Product page](#)

2 Images

Overview

Quantity:	100 µL
Target:	CUX1
Binding Specificity:	N-Term
Reactivity:	Human, Mouse, Rat
Host:	Rabbit
Clonality:	Polyclonal
Conjugate:	This CUX1 antibody is un-conjugated
Application:	Western Blotting (WB), ELISA

Product Details

Immunogen:	A synthesized peptide derived from human CUTL1, corresponding to a region within N-terminal amino acids.
Isotype:	IgG
Specificity:	CUTL1 Antibody detects endogenous levels of total CUTL1.
Predicted Reactivity:	Pig,Bovine,Sheep,Rabbit,Chicken,Xenopus
Purification:	The antiserum was purified by peptide affinity chromatography using SulfoLink™ Coupling Resin (Thermo Fisher Scientific).

Target Details

Target:	CUX1
---------	------

## Target Details

---

Alternative Name: CUX1 ([CUX1 Products](#))

---

Background: Description: Probably has a broad role in mammalian development as a repressor of developmentally regulated gene expression. May act by preventing binding of positively-activating CCAAT factors to promoters. Component of nf-munr repressor, binds to the matrix attachment regions (MARs) (5' and 3') of the immunoglobulin heavy chain enhancer. Represses T-cell receptor (TCR) beta enhancer function by binding to MARbeta, an ATC-rich DNA sequence located upstream of the TCR beta enhancer. Binds to the TH enhancer, may require the basic helix-loop-helix protein TCF4 as a coactivator (By similarity).  
Gene: CUX1

---

Molecular Weight: 164 kDa

---

Gene ID: 1523

---

UniProt: [P39880](#)

---

Pathways: [Cellular Glucan Metabolic Process](#)

---

## Application Details

---

Application Notes: WB 1:500-1:2000, ELISA(peptide) 1:20000-1:40000

---

Restrictions: For Research Use only

---

## Handling

---

Format: Liquid

---

Concentration: 1 mg/mL

---

Buffer: Rabbit IgG in phosphate buffered saline , pH 7.4, 150 mM NaCl, 0.02 % sodium azide and 50 % glycerol.

---

Preservative: Sodium azide

---

Precaution of Use: This product contains Sodium azide: a POISONOUS AND HAZARDOUS SUBSTANCE which should be handled by trained staff only.

---

Storage: -20 °C

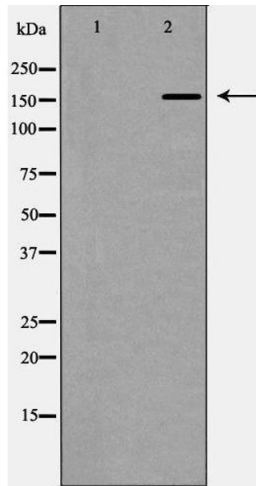
---

Storage Comment: Store at -20 °C. Stable for 12 months from date of receipt.

---

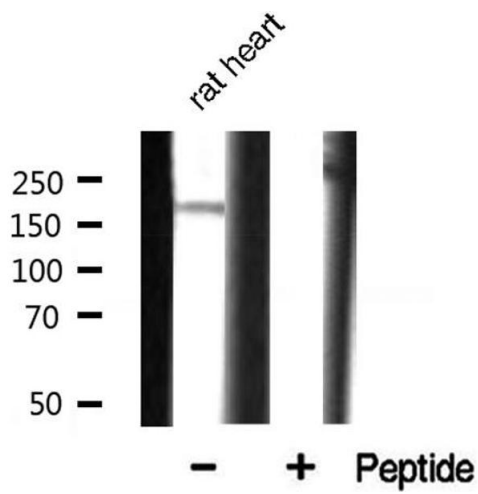
Expiry Date: 12 months

---



### Western Blotting

**Image 1.** Western blot analysis of CUTL1 expression in K562 cells. The lane on the left is treated with the antigen-specific peptide.



### Western Blotting

**Image 2.** Western blot analysis of CUTL1 expression in rat heart.