

Datasheet for ABIN6261140

anti-Cyclin A1 antibody

4 Images

[Go to Product page](#)

Overview

Quantity:	100 µL
Target:	Cyclin A1 (CCNA1)
Reactivity:	Human, Mouse
Host:	Rabbit
Clonality:	Polyclonal
Conjugate:	This Cyclin A1 antibody is un-conjugated
Application:	Western Blotting (WB), ELISA, Immunohistochemistry (IHC), Immunofluorescence (IF), Immunocytochemistry (ICC)

Product Details

Immunogen:	A synthesized peptide derived from human Cyclin A1
Isotype:	IgG
Specificity:	Cyclin A1 Antibody detects endogenous levels of total Cyclin A1
Cross-Reactivity:	Human, Mouse (Murine)
Purification:	The antiserum was purified by peptide affinity chromatography using SulfoLink™ Coupling Resin (Thermo Fisher Scientific).

Target Details

Target:	Cyclin A1 (CCNA1)
Alternative Name:	Cyclin A1 (CCNA1 Products)

Target Details

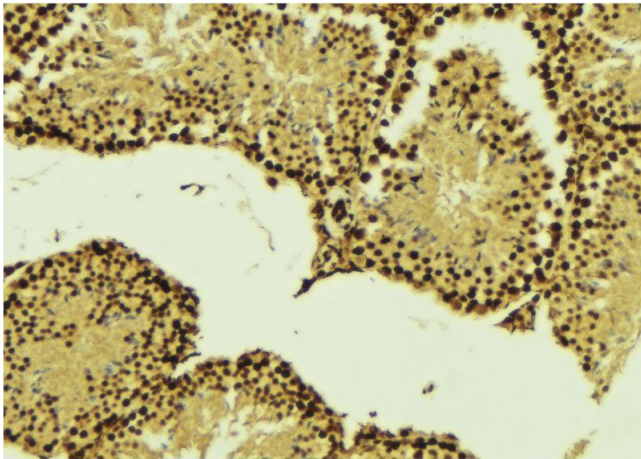
Background:	Description: May be involved in the control of the cell cycle at the G1/S (start) and G2/M (mitosis) transitions. May primarily function in the control of the germline meiotic cell cycle and additionally in the control of mitotic cell cycle in some somatic cells. Gene: CCNA1
Molecular Weight:	52 kDa
Gene ID:	8900
UniProt:	P78396
Pathways:	Apoptosis , Cell Division Cycle , AMPK Signaling , Mitotic G1-G1/S Phases , DNA Replication , M Phase , Synthesis of DNA

Application Details

Application Notes:	WB 1:500-1:2000,IHC 1:50-1:200,IF 1:100-1:500
Restrictions:	For Research Use only

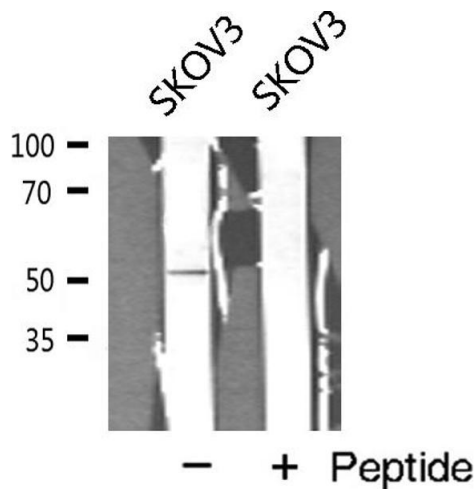
Handling

Format:	Liquid
Concentration:	1 mg/mL
Buffer:	Rabbit IgG in phosphate buffered saline , pH 7.4, 150 mM NaCl, 0.02 % sodium azide and 50 % glycerol.
Preservative:	Sodium azide
Precaution of Use:	This product contains Sodium azide: a POISONOUS AND HAZARDOUS SUBSTANCE which should be handled by trained staff only.
Storage:	-20 °C
Storage Comment:	Store at -20 °C.Stable for 12 months from date of receipt
Expiry Date:	12 months



Immunohistochemistry

Image 1. ABIN6268860 at 1/100 staining Mouse testis tissue by IHC-P. The sample was formaldehyde fixed and a heat mediated antigen retrieval step in citrate buffer was performed. The sample was then blocked and incubated with the antibody for 1.5 hours at 22°C. An HRP conjugated goat anti-rabbit antibody was used as the secondary.



Western Blotting

Image 2. Western blot analysis of Cyclin A1 expression in SKOV3 cell extract



Immunofluorescence (fixed cells)

Image 3. ABIN6268860 staining U-937 cells by IF/ICC. The sample were fixed with PFA and permeabilized in 0.1% Triton X-100, then blocked in 10% serum for 45 minutes at 25°C. The primary antibody was diluted at 1/200 and incubated with the sample for 1 hour at 37°C. An Alexa Fluor 594 conjugated goat anti-rabbit IgG (H+L) antibody (Cat.# S0006), diluted at 1/600, was used as secondary antibody

Please check the [product details page](#) for more images. Overall 4 images are available for ABIN6261140.