



[Go to Product page](#)

Datasheet for ABIN6261151
anti-Cyclin E1 antibody (C-Term)

2 Images

Overview

Quantity:	100 µL
Target:	Cyclin E1 (CCNE1)
Binding Specificity:	C-Term
Reactivity:	Human
Host:	Rabbit
Clonality:	Polyclonal
Conjugate:	This Cyclin E1 antibody is un-conjugated
Application:	Western Blotting (WB), Immunohistochemistry (IHC), ELISA, Immunofluorescence (IF), Immunocytochemistry (ICC)

Product Details

Immunogen:	A synthesized peptide derived from human Cyclin E1, corresponding to a region within C-terminal amino acids.
Isotype:	IgG
Specificity:	Cyclin E1 Antibody detects endogenous levels of total Cyclin E1.
Predicted Reactivity:	Bovine,Horse,Sheep
Purification:	The antiserum was purified by peptide affinity chromatography using SulfoLink™ Coupling Resin (Thermo Fisher Scientific).

Target Details

Target:	Cyclin E1 (CCNE1)
---------	-------------------

Target Details

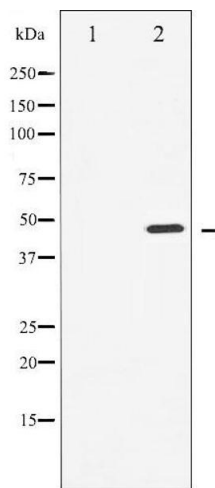
Alternative Name:	CCNE1 (CCNE1 Products)
Background:	Description: Essential for the control of the cell cycle at the G1/S (start) transition. Gene: CCNE1
Molecular Weight:	48kDa
Gene ID:	898
UniProt:	P24864
Pathways:	Cell Division Cycle , Intracellular Steroid Hormone Receptor Signaling Pathway , Nuclear Hormone Receptor Binding , Mitotic G1-G1/S Phases

Application Details

Application Notes:	WB 1:500-1:2000, IHC 1:50-1:200, IF/ICC 1:100-1:500, ELISA(peptide) 1:20000-1:40000
Restrictions:	For Research Use only

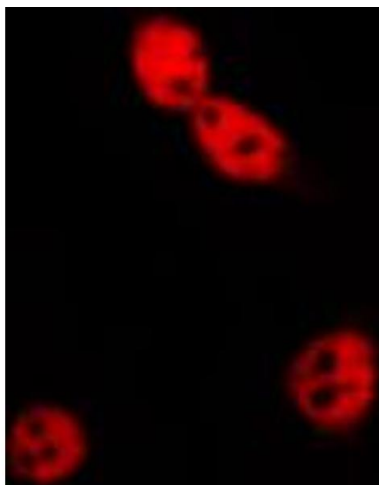
Handling

Format:	Liquid
Concentration:	1 mg/mL
Buffer:	Rabbit IgG in phosphate buffered saline , pH 7.4, 150 mM NaCl, 0.02 % sodium azide and 50 % glycerol.
Preservative:	Sodium azide
Precaution of Use:	This product contains Sodium azide: a POISONOUS AND HAZARDOUS SUBSTANCE which should be handled by trained staff only.
Storage:	-20 °C
Storage Comment:	Store at -20 °C. Stable for 12 months from date of receipt.
Expiry Date:	12 months



Western Blotting

Image 1. Western blot analysis of Cyclin E1 expression in Paclitaxel treated HeLa whole cell lysates, The lane on the left is treated with the antigen-specific peptide.



Immunofluorescence (fixed cells)

Image 2. ABIN6269196 staining MCF7 by IF/ICC. The sample were fixed with PFA and permeabilized in 0.1% Triton X-100, then blocked in 10% serum for 45 minutes at 25°C. The primary antibody was diluted at 1/200 and incubated with the sample for 1 hour at 37°C. An Alexa Fluor 594 conjugated goat anti-rabbit IgG (H+L) Ab, diluted at 1/600, was used as the secondary antibody.