



[Go to Product page](#)

Datasheet for ABIN6261191
anti-CYP1A1/2 antibody

2 Images

Overview

| | |
|--------------|--|
| Quantity: | 100 µL |
| Target: | CYP1A1/2 |
| Reactivity: | Rat, Human, Mouse |
| Host: | Rabbit |
| Clonality: | Polyclonal |
| Conjugate: | This CYP1A1/2 antibody is un-conjugated |
| Application: | Western Blotting (WB), ELISA, Immunofluorescence (IF), Immunocytochemistry (ICC) |

Product Details

| | |
|-------------------|---|
| Immunogen: | A synthesized peptide derived from human Cytochrome P450 1A1/2 |
| Isotype: | IgG |
| Specificity: | Cytochrome P450 1A1/2 Antibody detects endogenous levels of total Cytochrome P450 1A1/2 |
| Cross-Reactivity: | Human, Mouse (Murine), Rat (Rattus) |
| Purification: | The antiserum was purified by peptide affinity chromatography using SulfoLink™ Coupling Resin (Thermo Fisher Scientific). |

Target Details

| | |
|-------------------|---|
| Target: | CYP1A1/2 |
| Alternative Name: | Cytochrome P450 1A1/2 (CYP1A1/2 Products) |
| Background: | Description: Cytochromes P450 are a group of heme-thiolate monooxygenases. In liver |

Target Details

microsomes, this enzyme is involved in an NADPH-dependent electron transport pathway. It oxidizes a variety of structurally unrelated compounds, including steroids, fatty acids, and xenobiotics.

Gene: CYP1A1

Molecular Weight: 58 kDa

Gene ID: 1543

UniProt: [P04798](#), [P05177](#)

Application Details

Application Notes: WB 1:500-1:2000, IF/ICC 1:100-1:500

Restrictions: For Research Use only

Handling

Format: Liquid

Concentration: 1 mg/mL

Buffer: Rabbit IgG in phosphate buffered saline , pH 7.4, 150 mM NaCl, 0.02 % sodium azide and 50 % glycerol.

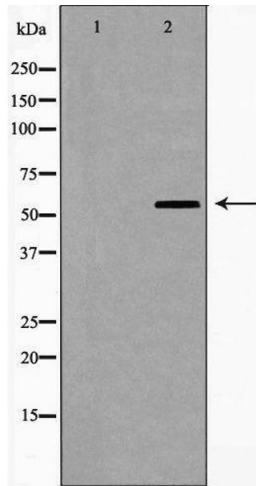
Preservative: Sodium azide

Precaution of Use: This product contains Sodium azide: a POISONOUS AND HAZARDOUS SUBSTANCE which should be handled by trained staff only.

Storage: -20 °C

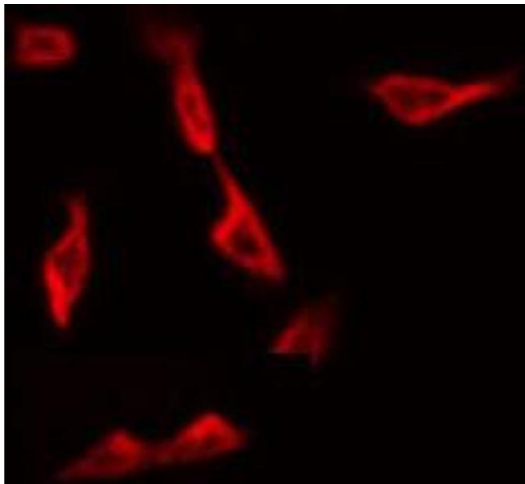
Storage Comment: Store at -20 °C. Stable for 12 months from date of receipt

Expiry Date: 12 months



Western Blotting

Image 1. Western blot analysis of Cytochrome P450 1A1/2 expression in RAW264.7 cells. The lane on the left is treated with the antigen-specific peptide.



Immunofluorescence (fixed cells)

Image 2. ABIN6268859 staining Hela by IF/ICC. The sample were fixed with PFA and permeabilized in 0.1% Triton X-100, then blocked in 10% serum for 45 minutes at 25°C. The primary antibody was diluted at 1/200 and incubated with the sample for 1 hour at 37°C. An Alexa Fluor 594 conjugated goat anti-rabbit IgG (H+L) Ab, diluted at 1/600, was used as the secondary antibody.