



[Go to Product page](#)

Datasheet for ABIN6261205  
**anti-CYP4F3 antibody (N-Term)**

1 Image

Overview

Quantity:	100 µL
Target:	CYP4F3
Binding Specificity:	N-Term
Reactivity:	Human
Host:	Rabbit
Clonality:	Polyclonal
Conjugate:	This CYP4F3 antibody is un-conjugated
Application:	Western Blotting (WB), ELISA

Product Details

Immunogen:	A synthesized peptide derived from human Cytochrome P450 4F3, corresponding to a region within N-terminal amino acids.
Isotype:	IgG
Specificity:	Cytochrome P450 4F3 Antibody detects endogenous levels of total Cytochrome P450 4F3.
Predicted Reactivity:	Dog
Purification:	The antiserum was purified by peptide affinity chromatography using SulfoLink™ Coupling Resin (Thermo Fisher Scientific).

Target Details

Target:	CYP4F3
---------	--------

## Target Details

---

Alternative Name:	CYP4F3 ( <a href="#">CYP4F3 Products</a> )
Background:	Description: Isoform CYP4F3A: Catalyzes the omega-hydroxylation of leukotriene-B4, a potent chemoattractant for polymorphonuclear leukocytes, it has low activity for arachidonic acid. Gene: CYP4F3
Molecular Weight:	60 kDa
Gene ID:	4051
UniProt:	<a href="#">Q08477</a>
Pathways:	<a href="#">Steroid Hormone Biosynthesis</a> , <a href="#">C21-Steroid Hormone Metabolic Process</a> , <a href="#">Monocarboxylic Acid Catabolic Process</a>

## Application Details

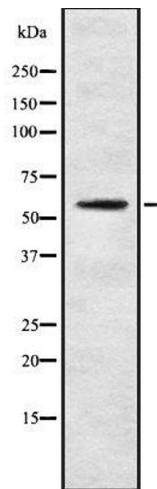
---

Application Notes:	WB 1:1000-3000, ELISA(peptide) 1:20000-1:40000
Restrictions:	For Research Use only

## Handling

---

Format:	Liquid
Concentration:	1 mg/mL
Buffer:	Rabbit IgG in phosphate buffered saline , pH 7.4, 150 mM NaCl, 0.02 % sodium azide and 50 % glycerol.
Preservative:	Sodium azide
Precaution of Use:	This product contains Sodium azide: a POISONOUS AND HAZARDOUS SUBSTANCE which should be handled by trained staff only.
Storage:	-20 °C
Storage Comment:	Store at -20 °C. Stable for 12 months from date of receipt.
Expiry Date:	12 months



### Western Blotting

**Image 1.** Western blot analysis of Cytochrome P450 4F3 using COL0205 whole cell lysates