

Datasheet for ABIN6261206
anti-CYP4F8 antibody (C-Term)



[Go to Product page](#)

1 Image

Overview

Quantity:	100 µL
Target:	CYP4F8
Binding Specificity:	C-Term
Reactivity:	Human
Host:	Rabbit
Clonality:	Polyclonal
Conjugate:	This CYP4F8 antibody is un-conjugated
Application:	Western Blotting (WB), ELISA

Product Details

Immunogen:	A synthesized peptide derived from human Cytochrome P450 4F8, corresponding to a region within C-terminal amino acids.
Isotype:	IgG
Specificity:	Cytochrome P450 4F8 Antibody detects endogenous levels of total Cytochrome P450 4F8.
Predicted Reactivity:	Dog
Purification:	The antiserum was purified by peptide affinity chromatography using SulfoLink™ Coupling Resin (Thermo Fisher Scientific).

Target Details

Target:	CYP4F8
---------	--------

Target Details

Alternative Name: CYP4F8 ([CYP4F8 Products](#))

Background: Description: Hydroxylates arachidonic acid (20:4n-6) to (18R)-hydroxyarachidonate. Shows little activity against prostaglandin (PG) D2, PGE1, PGE2, PGF2alpha, and leukotriene B4. Catalyzes omega-2 and omega-3-hydroxylation of PGH1 and PGH2. Catalyzes epoxidation of 4,7,10,13,16,19-(Z)-docosahexaenoic acid (22:6n-3) and 7,10,13,16,19-(Z)-docosapentaenoic acid (22:5n-3) and omega-3-hydroxylation of 4,7,10,13,16-(Z)-docosapentaenoic acid (22:5n-6). Catalyzes hydroxylation of PGI2 and carbaprostacyclin.
Gene: CYP4F8

Molecular Weight: 60 kDa

Gene ID: 11283

UniProt: [P98187](#)

Application Details

Application Notes: WB 1:1000-3000, ELISA(peptide) 1:20000-1:40000

Restrictions: For Research Use only

Handling

Format: Liquid

Concentration: 1 mg/mL

Buffer: Rabbit IgG in phosphate buffered saline , pH 7.4, 150 mM NaCl, 0.02 % sodium azide and 50 % glycerol.

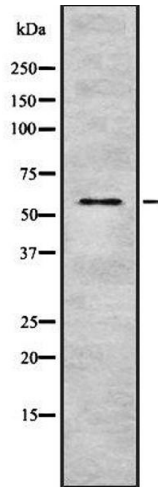
Preservative: Sodium azide

Precaution of Use: This product contains Sodium azide: a POISONOUS AND HAZARDOUS SUBSTANCE which should be handled by trained staff only.

Storage: -20 °C

Storage Comment: Store at -20 °C. Stable for 12 months from date of receipt.

Expiry Date: 12 months



Western Blotting

Image 1. Western blot analysis of Cytochrome P450 4F8 using Jurkat whole cell lysates