



[Go to Product page](#)

Datasheet for ABIN6261211
anti-D2HGDH antibody (C-Term)

2 Images

Overview

Quantity:	100 µL
Target:	D2HGDH
Binding Specificity:	C-Term
Reactivity:	Human, Mouse, Rat
Host:	Rabbit
Clonality:	Polyclonal
Conjugate:	This D2HGDH antibody is un-conjugated
Application:	Western Blotting (WB), Immunohistochemistry (IHC)

Product Details

Immunogen:	A synthesized peptide derived from human D2HGDH, corresponding to a region within C-terminal amino acids.
Isotype:	IgG
Specificity:	D2HGDH Antibody detects endogenous levels of total D2HGDH.
Predicted Reactivity:	Zebrafish,Bovine,Horse,Sheep,Rabbit,Dog,Chicken,Xenopus
Purification:	The antiserum was purified by peptide affinity chromatography using SulfoLink™ Coupling Resin (Thermo Fisher Scientific).

Target Details

Target:	D2HGDH
---------	--------

Target Details

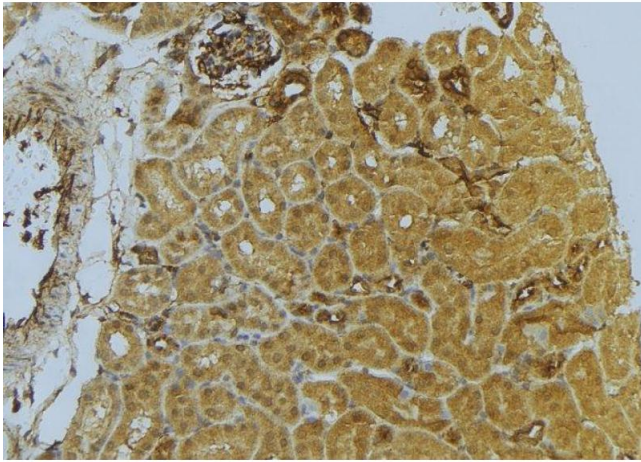
Alternative Name:	D2HGDH (D2HGDH Products)
Background:	Description: Catalyzes the oxidation of D-2-hydroxyglutarate to alpha-ketoglutarate. Gene: D2HGDH
Molecular Weight:	56 kDa
Gene ID:	728294
UniProt:	Q8N465

Application Details

Application Notes:	WB 1:500-1:2000, IHC 1:50-1:200
Restrictions:	For Research Use only

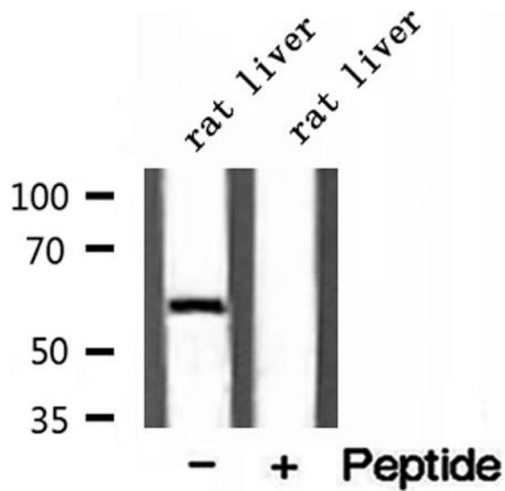
Handling

Format:	Liquid
Concentration:	1 mg/mL
Buffer:	Rabbit IgG in phosphate buffered saline , pH 7.4, 150 mM NaCl, 0.02 % sodium azide and 50 % glycerol.
Preservative:	Sodium azide
Precaution of Use:	This product contains Sodium azide: a POISONOUS AND HAZARDOUS SUBSTANCE which should be handled by trained staff only.
Storage:	-20 °C
Storage Comment:	Store at -20 °C. Stable for 12 months from date of receipt.
Expiry Date:	12 months



Immunohistochemistry

Image 1. ABIN6273039 at 1/100 staining Mouse kidney tissue by IHC-P. The sample was formaldehyde fixed and a heat mediated antigen retrieval step in citrate buffer was performed. The sample was then blocked and incubated with the antibody for 1.5 hours at 22°C. An HRP conjugated goat anti-rabbit antibody was used as the secondary



Western Blotting

Image 2. Western blot analysis of extracts of rat liver tissue, using D2HGDH antibody.