

Datasheet for ABIN6261240
anti-DCP1A antibody (Internal Region)[Go to Product page](#)

2 Images

Overview

| | |
|----------------------|--|
| Quantity: | 100 µL |
| Target: | DCP1A |
| Binding Specificity: | Internal Region |
| Reactivity: | Human, Mouse, Rat |
| Host: | Rabbit |
| Clonality: | Polyclonal |
| Conjugate: | This DCP1A antibody is un-conjugated |
| Application: | Western Blotting (WB), ELISA, Immunohistochemistry (IHC), Immunofluorescence (IF), Immunocytochemistry (ICC) |

Product Details

| | |
|-----------------------|---|
| Immunogen: | A synthesized peptide derived from human DCP1A, corresponding to a region within the internal amino acids. |
| Isotype: | IgG |
| Specificity: | DCP1A Antibody detects endogenous levels of total DCP1A. |
| Predicted Reactivity: | Pig,Bovine,Horse,Sheep,Rabbit,Dog |
| Purification: | The antiserum was purified by peptide affinity chromatography using SulfoLink™ Coupling Resin (Thermo Fisher Scientific). |

Target Details

| | |
|---------|-------|
| Target: | DCP1A |
|---------|-------|

Target Details

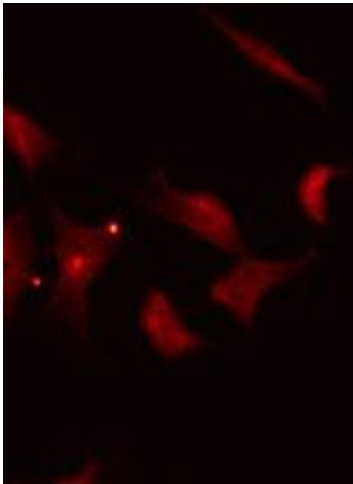
| | |
|-------------------|--|
| Alternative Name: | DCP1A (DCP1A Products) |
| Background: | <p>Description: Necessary for the degradation of mRNAs, both in normal mRNA turnover and in nonsense-mediated mRNA decay. Removes the 7-methyl guanine cap structure from mRNA molecules, yielding a 5'-phosphorylated mRNA fragment and 7m-GDP. Contributes to the transactivation of target genes after stimulation by TGFB1.</p> <p>Gene: DCP1A</p> |
| Molecular Weight: | 75kDa |
| Gene ID: | 55802 |
| UniProt: | Q9NPI6 |

Application Details

| | |
|--------------------|---|
| Application Notes: | WB 1:500-1:2000, IF/ICC 1:100-1:500, IHC 1:50-1:200, ELISA(peptide) 1:20000-1:40000 |
| Restrictions: | For Research Use only |

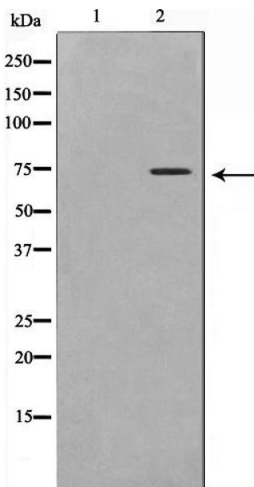
Handling

| | |
|--------------------|--|
| Format: | Liquid |
| Concentration: | 1 mg/mL |
| Buffer: | Rabbit IgG in phosphate buffered saline , pH 7.4, 150 mM NaCl, 0.02 % sodium azide and 50 % glycerol. |
| Preservative: | Sodium azide |
| Precaution of Use: | This product contains Sodium azide: a POISONOUS AND HAZARDOUS SUBSTANCE which should be handled by trained staff only. |
| Storage: | -20 °C |
| Storage Comment: | Store at -20 °C. Stable for 12 months from date of receipt. |
| Expiry Date: | 12 months |



Immunofluorescence (fixed cells)

Image 1. ABIN6266855 staining Hela by IF/ICC. The sample were fixed with PFA and permeabilized in 0.1% Triton X-100,then blocked in 10% serum for 45 minutes at 25°C. The primary antibody was diluted at 1/200 and incubated with the sample for 1 hour at 37°C. An Alexa Fluor 594 conjugated goat anti-rabbit IgG (H+L) Ab, diluted at 1/600, was used as the secondary antibody.



Western Blotting

Image 2. Western blot analysis on Jurkat cell lysate using DCP1A Antibody,The lane on the left is treated with the antigen-specific peptide.