

Datasheet for ABIN6261311
anti-DLG1 antibody (Internal Region)

2 Images

[Go to Product page](#)

Overview

Quantity:	100 µL
Target:	DLG1
Binding Specificity:	Internal Region
Reactivity:	Human, Rat, Mouse
Host:	Rabbit
Clonality:	Polyclonal
Conjugate:	This DLG1 antibody is un-conjugated
Application:	Western Blotting (WB), ELISA, Immunofluorescence (IF), Immunocytochemistry (ICC)

Product Details

Immunogen:	A synthesized peptide derived from human DLG1, corresponding to a region within the internal amino acids.
Isotype:	IgG
Specificity:	DLG1 Antibody detects endogenous levels of total DLG1.
Predicted Reactivity:	Bovine,Horse
Purification:	The antiserum was purified by peptide affinity chromatography using SulfoLink™ Coupling Resin (Thermo Fisher Scientific).

Target Details

Target:	DLG1
---------	------

Target Details

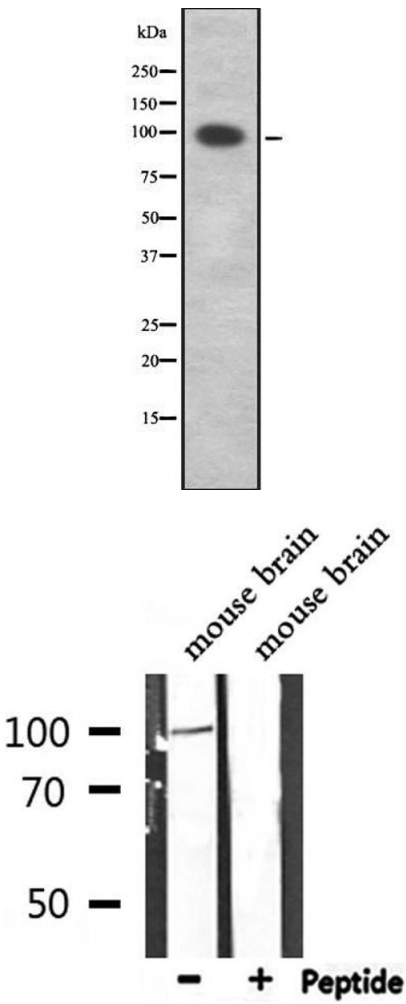
Alternative Name:	DLG1 (DLG1 Products)
Background:	<p>Description: Essential multidomain scaffolding protein required for normal development (By similarity). Recruits channels, receptors and signaling molecules to discrete plasma membrane domains in polarized cells. May play a role in adherens junction assembly, signal transduction, cell proliferation, synaptogenesis and lymphocyte activation. Regulates the excitability of cardiac myocytes by modulating the functional expression of Kv4 channels. Functional regulator of Kv1.5 channel.</p> <p>Gene: DLG1</p>
Molecular Weight:	100 kDa
Gene ID:	1739
UniProt:	Q12959
Pathways:	Regulation of Actin Filament Polymerization , Cell-Cell Junction Organization , Production of Molecular Mediator of Immune Response

Application Details

Application Notes:	WB 1:1000-3000, IF/ICC 1:100-1:500, ELISA(peptide) 1:20000-1:40000
Restrictions:	For Research Use only

Handling

Format:	Liquid
Concentration:	1 mg/mL
Buffer:	Rabbit IgG in phosphate buffered saline , pH 7.4, 150 mM NaCl, 0.02 % sodium azide and 50 % glycerol.
Preservative:	Sodium azide
Precaution of Use:	This product contains Sodium azide: a POISONOUS AND HAZARDOUS SUBSTANCE which should be handled by trained staff only.
Storage:	-20 °C
Storage Comment:	Store at -20 °C. Stable for 12 months from date of receipt.
Expiry Date:	12 months



Western Blotting

Image 1. Western blot analysis of DLG1 using Jurkat whole cell lysates

Western Blotting

Image 2. Western blot analysis of extracts from mouse brain, using DLG1 Antibody.