



[Go to Product page](#)

Datasheet for ABIN6261314

anti-DLGAP1 antibody (Internal Region)

2 Images

Overview

Quantity:	100 µL
Target:	DLGAP1
Binding Specificity:	Internal Region
Reactivity:	Human, Mouse, Rat
Host:	Rabbit
Clonality:	Polyclonal
Conjugate:	This DLGAP1 antibody is un-conjugated
Application:	Western Blotting (WB), ELISA, Immunohistochemistry (IHC), Immunofluorescence (IF), Immunocytochemistry (ICC)

Product Details

Immunogen:	A synthesized peptide derived from human DLGAP1, corresponding to a region within the internal amino acids.
Isotype:	IgG
Specificity:	DLGAP1 Antibody detects endogenous levels of total DLGAP1.
Predicted Reactivity:	Pig,Bovine,Horse,Sheep,Rabbit,Dog
Purification:	The antiserum was purified by peptide affinity chromatography using SulfoLink™ Coupling Resin (Thermo Fisher Scientific).

Target Details

Target:	DLGAP1
---------	--------

Target Details

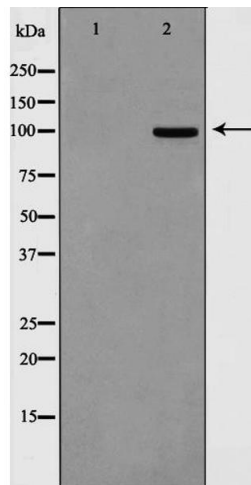
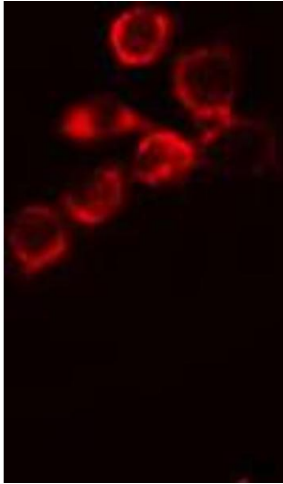
Alternative Name:	DLGAP1 (DLGAP1 Products)
Background:	Description: Part of the postsynaptic scaffold in neuronal cells. Gene: DLGAP1
Molecular Weight:	108kDa
Gene ID:	9229
UniProt:	O14490

Application Details

Application Notes:	WB: 1:500-1:3000, IHC 1:50-1:200, IF/ICC: 1:100-1:500, ELISA(peptide) 1:20000-1:40000
Restrictions:	For Research Use only

Handling

Format:	Liquid
Concentration:	1 mg/mL
Buffer:	Rabbit IgG in phosphate buffered saline , pH 7.4, 150 mM NaCl, 0.02 % sodium azide and 50 % glycerol.
Preservative:	Sodium azide
Precaution of Use:	This product contains Sodium azide: a POISONOUS AND HAZARDOUS SUBSTANCE which should be handled by trained staff only.
Storage:	-20 °C
Storage Comment:	Store at -20 °C. Stable for 12 months from date of receipt.
Expiry Date:	12 months



Immunofluorescence (fixed cells)

Image 1. ABIN6266687 staining MCF-7 cells by IF/ICC. The sample were fixed with PFA and permeabilized in 0.1% Triton X-100, then blocked in 10% serum for 45 minutes at 25°C. The primary antibody was diluted at 1/200 and incubated with the sample for 1 hour at 37°C. An Alexa Fluor 594 conjugated goat anti-rabbit IgG (H+L) antibody (Cat.# S0006), diluted at 1/600, was used as secondary antibody.

Western Blotting

Image 2. Western blot analysis on HepG2 cell lysate using DLGP1 Antibody. The lane on the left is treated with the antigen-specific peptide.