

Datasheet for ABIN6261322
anti-POLL antibody (C-Term)[Go to Product page](#)

2 Images

Overview

Quantity:	100 µL
Target:	POLL
Binding Specificity:	C-Term
Reactivity:	Human, Rat, Mouse
Host:	Rabbit
Clonality:	Polyclonal
Conjugate:	This POLL antibody is un-conjugated
Application:	Western Blotting (WB), ELISA, Immunofluorescence (IF), Immunocytochemistry (ICC)

Product Details

Immunogen:	A synthesized peptide derived from human DNA pol lambda, corresponding to a region within C-terminal amino acids.
Isotype:	IgG
Specificity:	DNA pol lambda Antibody detects endogenous levels of total DNA pol lambda.
Predicted Reactivity:	Pig,Zebrafish,Bovine,Horse,Sheep,Rabbit,Dog,Xenopus
Purification:	The antiserum was purified by peptide affinity chromatography using SulfoLink™ Coupling Resin (Thermo Fisher Scientific).

Target Details

Target:	POLL
---------	------

Target Details

Alternative Name:	POLL (POLL Products)
Background:	<p>Description: DNA polymerase that functions in several pathways of DNA repair (PubMed:11457865, PubMed:19806195, PubMed:20693240). Involved in base excision repair (BER) responsible for repair of lesions that give rise to abasic (AP) sites in DNA (PubMed:11457865, PubMed:19806195). Also contributes to DNA double-strand break repair by non-homologous end joining and homologous recombination (PubMed:19806195, PubMed:20693240). Has both template-dependent and template-independent (terminal transferase) DNA polymerase activities (PubMed:10982892, PubMed:10887191, PubMed:12809503, PubMed:14627824, PubMed:15537631, PubMed:19806195). Has also a 5'-deoxyribose-5-phosphate lyase (dRP lyase) activity (PubMed:11457865, PubMed:19806195).</p> <p>Gene: POLL</p>
Molecular Weight:	63kDa
Gene ID:	27343
UniProt:	Q9UGP5
Pathways:	DNA Damage Repair , Production of Molecular Mediator of Immune Response

Application Details

Application Notes:	WB 1:1000, IF/ICC 1:100-1:500, ELISA(peptide) 1:20000-1:40000
Restrictions:	For Research Use only

Handling

Format:	Liquid
Concentration:	1 mg/mL
Buffer:	Rabbit IgG in phosphate buffered saline , pH 7.4, 150 mM NaCl, 0.02 % sodium azide and 50 % glycerol.
Preservative:	Sodium azide
Precaution of Use:	This product contains Sodium azide: a POISONOUS AND HAZARDOUS SUBSTANCE which should be handled by trained staff only.
Storage:	-20 °C
Storage Comment:	Store at -20 °C. Stable for 12 months from date of receipt.

Validation report #104221 for Western Blotting (WB)

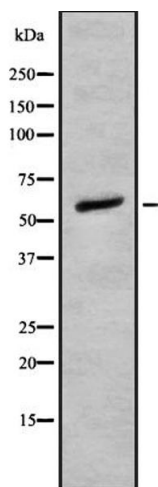
**Western Blotting**

Image 1. Western blot analysis of DNA pol λ using 293 whole cell lysates

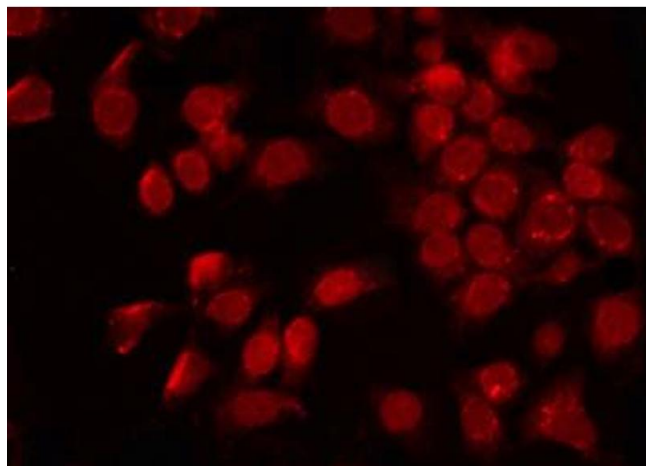
**Immunofluorescence (fixed cells)**

Image 2. ABIN6272288 staining 293 by IF/ICC. The sample were fixed with PFA and permeabilized in 0.1% Triton X-100, then blocked in 10% serum for 45 minutes at 25°C. The primary antibody was diluted at 1/200 and incubated with the sample for 1 hour at 37°C. An Alexa Fluor 594 conjugated goat anti-rabbit IgG (H+L) Ab, diluted at 1/600, was used as the secondary antibody.