

Datasheet for ABIN6261368  
**anti-DBN1 antibody (Internal Region)**[Go to Product page](#)

## 3 Images

## Overview

Quantity:	100 µL
Target:	DBN1
Binding Specificity:	Internal Region
Reactivity:	Human, Mouse, Rat
Host:	Rabbit
Clonality:	Polyclonal
Conjugate:	This DBN1 antibody is un-conjugated
Application:	Western Blotting (WB), Immunofluorescence (IF), Immunohistochemistry (IHC), Immunocytochemistry (ICC)

## Product Details

Immunogen:	A synthesized peptide derived from human Drebrin, corresponding to a region within the internal amino acids.
Isotype:	IgG
Specificity:	Drebrin Antibody detects endogenous levels of total Drebrin.
Predicted Reactivity:	Pig,Horse,Dog
Purification:	The antiserum was purified by peptide affinity chromatography using SulfoLink™ Coupling Resin (Thermo Fisher Scientific).

## Target Details

Target:	DBN1
---------	------

## Target Details

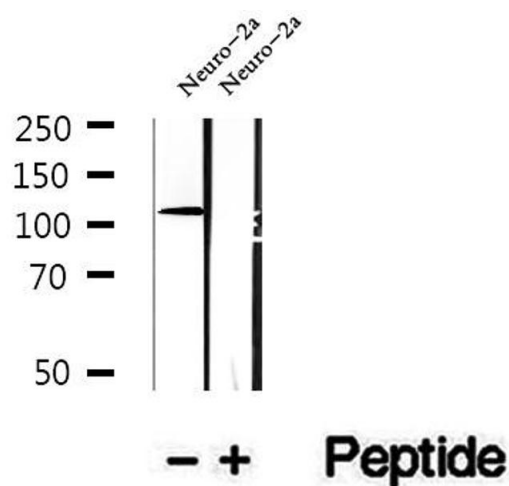
Alternative Name:	DBN1 ( <a href="#">DBN1 Products</a> )
Background:	Description: Drebrins might play some role in cell migration, extension of neuronal processes and plasticity of dendrites. Required for actin polymerization at immunological synapses (IS) and for CXCR4 recruitment to IS.  Gene: DBN1
Molecular Weight:	100-130 kDa
Gene ID:	1627
UniProt:	<a href="#">Q16643</a>
Pathways:	<a href="#">Maintenance of Protein Location</a>

## Application Details

Application Notes:	WB 1:500-1:2000, IHC 1:50-1:200, IF/ICC 1:100-1:500
Restrictions:	For Research Use only

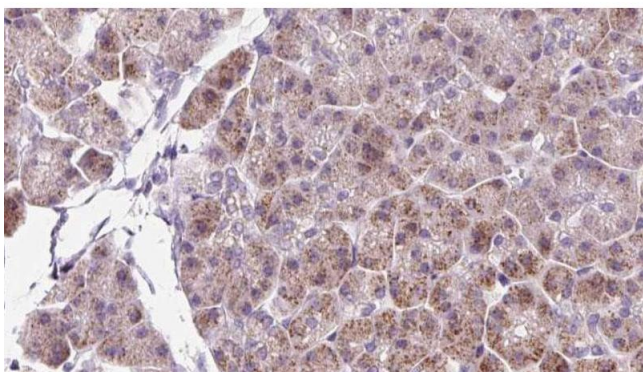
## Handling

Format:	Liquid
Concentration:	1 mg/mL
Buffer:	Rabbit IgG in phosphate buffered saline , pH 7.4, 150 mM NaCl, 0.02 % sodium azide and 50 % glycerol.
Preservative:	Sodium azide
Precaution of Use:	This product contains Sodium azide: a POISONOUS AND HAZARDOUS SUBSTANCE which should be handled by trained staff only.
Storage:	-20 °C
Storage Comment:	Store at -20 °C. Stable for 12 months from date of receipt.
Expiry Date:	12 months



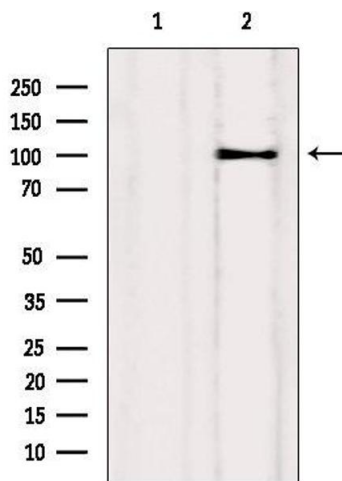
### Western Blotting

**Image 1.** Western blot analysis of extracts of Neuro-2a cells, using Drebrin antibody.



### Immunohistochemistry

**Image 2.** ABIN6273232 at 1/100 staining Human pancreas cancer tissue by IHC-P. The sample was formaldehyde fixed and a heat mediated antigen retrieval step in citrate buffer was performed. The sample was then blocked and incubated with the antibody for 1.5 hours at 22°C. An HRP conjugated goat anti-rabbit antibody was used as the secondary.



### Western Blotting

**Image 3.** Western blot analysis of extracts from Myeloma cells, using Drebrin Antibody. Lane 1 was treated with the blocking peptide.