

Datasheet for ABIN6261378
anti-KALRN antibody (Internal Region)[Go to Product page](#)

1 Image

Overview

Quantity:	100 µL
Target:	KALRN
Binding Specificity:	Internal Region
Reactivity:	Human, Mouse, Rat
Host:	Rabbit
Clonality:	Polyclonal
Conjugate:	This KALRN antibody is un-conjugated
Application:	Western Blotting (WB), ELISA, Immunocytochemistry (ICC), Immunofluorescence (IF)

Product Details

Immunogen:	A synthesized peptide derived from human DUET, corresponding to a region within the internal amino acids.
Isotype:	IgG
Specificity:	DUET Antibody detects endogenous levels of total DUET.
Predicted Reactivity:	Sheep,Rabbit,Dog,Chicken
Purification:	The antiserum was purified by peptide affinity chromatography using SulfoLink™ Coupling Resin (Thermo Fisher Scientific).

Target Details

Target:	KALRN
---------	-------

Target Details

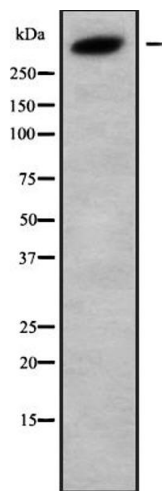
Alternative Name:	KALRN (KALRN Products)
Background:	<p>Description: Promotes the exchange of GDP by GTP. Activates specific Rho GTPase family members, thereby inducing various signaling mechanisms that regulate neuronal shape, growth, and plasticity, through their effects on the actin cytoskeleton. Induces lamellipodia independent of its GEF activity.</p> <p>Gene: KALRN</p>
Molecular Weight:	340 kDa
Gene ID:	8997
UniProt:	O60229
Pathways:	Neurotrophin Signaling Pathway

Application Details

Application Notes:	WB 1:1000-3000, ELISA(peptide) 1:20000-1:40000, IF/ICC 1:100-1:500
Restrictions:	For Research Use only

Handling

Format:	Liquid
Concentration:	1 mg/mL
Buffer:	Rabbit IgG in phosphate buffered saline , pH 7.4, 150 mM NaCl, 0.02 % sodium azide and 50 % glycerol.
Preservative:	Sodium azide
Precaution of Use:	This product contains Sodium azide: a POISONOUS AND HAZARDOUS SUBSTANCE which should be handled by trained staff only.
Storage:	-20 °C
Storage Comment:	Store at -20 °C. Stable for 12 months from date of receipt.
Expiry Date:	12 months



Western Blotting

Image 1. Western blot analysis of DUET using HUVEC whole cell lysates