



[Go to Product page](#)

Datasheet for ABIN6261391

anti-DYNC1H1 antibody (Internal Region)

3 Images

Overview

Quantity:	100 µL
Target:	DYNC1H1
Binding Specificity:	Internal Region
Reactivity:	Human, Rat, Mouse
Host:	Rabbit
Clonality:	Polyclonal
Conjugate:	This DYNC1H1 antibody is un-conjugated
Application:	Western Blotting (WB), ELISA, Immunohistochemistry (IHC), Immunofluorescence (IF), Immunocytochemistry (ICC)

Product Details

Immunogen:	A synthesized peptide derived from human DYNC1H1, corresponding to a region within the internal amino acids.
Isotype:	IgG
Specificity:	DYNC1H1 Antibody detects endogenous levels of total DYNC1H1.
Predicted Reactivity:	Pig,Bovine,Rabbit,Dog,Chicken
Purification:	The antiserum was purified by peptide affinity chromatography using SulfoLink™ Coupling Resin (Thermo Fisher Scientific).

Target Details

Target:	DYNC1H1
---------	---------

Target Details

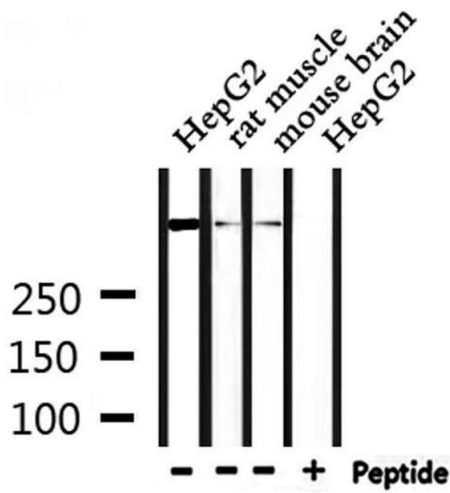
Alternative Name:	DYNC1H1 (DYNC1H1 Products)
Background:	Description: Cytoplasmic dynein 1 acts as a motor for the intracellular retrograde motility of vesicles and organelles along microtubules. Dynein has ATPase activity, the force-producing power stroke is thought to occur on release of ADP. Plays a role in mitotic spindle assembly and metaphase plate congression (PubMed:27462074). Gene: DYNC1H1
Molecular Weight:	532kDa
Gene ID:	1778
UniProt:	Q14204
Pathways:	M Phase, Ribonucleoprotein Complex Subunit Organization

Application Details

Application Notes:	WB 1:1000-3000, IHC 1:200, IF/ICC 1:100-1:500, ELISA(peptide) 1:20000-1:40000
Restrictions:	For Research Use only

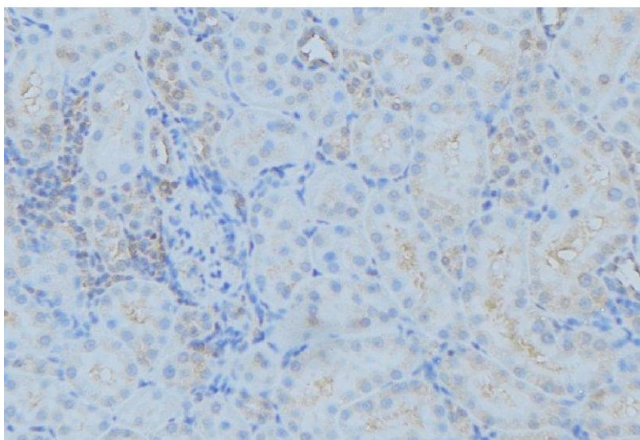
Handling

Format:	Liquid
Concentration:	1 mg/mL
Buffer:	Rabbit IgG in phosphate buffered saline , pH 7.4, 150 mM NaCl, 0.02 % sodium azide and 50 % glycerol.
Preservative:	Sodium azide
Precaution of Use:	This product contains Sodium azide: a POISONOUS AND HAZARDOUS SUBSTANCE which should be handled by trained staff only.
Storage:	-20 °C
Storage Comment:	Store at -20 °C. Stable for 12 months from date of receipt.
Expiry Date:	12 months



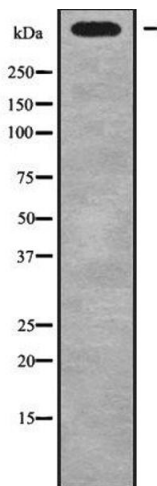
Western Blotting

Image 1. Western blot analysis of extracts from HepG2 and rat muscle and mouse brain, using DYNC1H1 Antibody.



Immunohistochemistry

Image 2. ABIN6279381 at 1/100 staining Mouse kidney tissue by IHC-P. The sample was formaldehyde fixed and a heat mediated antigen retrieval step in citrate buffer was performed. The sample was then blocked and incubated with the antibody for 1.5 hours at 22°C. An HRP conjugated goat anti-rabbit antibody was used as the secondary



Western Blotting

Image 3. Western blot analysis of DYNC1H1 using NIH-3T3 whole cell lysates