



[Go to Product page](#)

Datasheet for ABIN6261416

anti-SLC1A2 antibody (Internal Region)

1 Image

Overview

Quantity:	100 µL
Target:	SLC1A2
Binding Specificity:	Internal Region
Reactivity:	Human, Rat, Mouse
Host:	Rabbit
Clonality:	Polyclonal
Conjugate:	This SLC1A2 antibody is un-conjugated
Application:	Western Blotting (WB), ELISA, Immunocytochemistry (ICC), Immunofluorescence (IF)

Product Details

Immunogen:	A synthesized peptide derived from human EAAT2, corresponding to a region within the internal amino acids.
Isotype:	IgG
Specificity:	EAAT2 Antibody detects endogenous levels of total EAAT2.
Predicted Reactivity:	Pig,Horse,Sheep,Rabbit,Dog,Chicken
Purification:	The antiserum was purified by peptide affinity chromatography using SulfoLink™ Coupling Resin (Thermo Fisher Scientific).

Target Details

Target:	SLC1A2
---------	--------

Target Details

Alternative Name: SLC1A2 ([SLC1A2 Products](#))

Background: Description: Sodium-dependent, high-affinity amino acid transporter that mediates the uptake of L-glutamate and also L-aspartate and D-aspartate (PubMed:7521911, PubMed:14506254, PubMed:15265858, PubMed:26690923). Functions as a symporter that transports one amino acid molecule together with two or three Na⁺ ions and one proton, in parallel with the counter-transport of one K⁺ ion (PubMed:14506254). Mediates Cl⁻ flux that is not coupled to amino acid transport, this avoids the accumulation of negative charges due to aspartate and Na⁺ symport (PubMed:14506254). Essential for the rapid removal of released glutamate from the synaptic cleft, and for terminating the postsynaptic action of glutamate (By similarity).

Gene: SLC1A2

Molecular Weight: 62 kDa

Gene ID: 6506

UniProt: [P43004](#)

Pathways: [Dicarboxylic Acid Transport](#)

Application Details

Application Notes: WB 1:1000-3000, IF/ICC 1:100-1:500, ELISA(peptide) 1:20000-1:40000

Restrictions: For Research Use only

Handling

Format: Liquid

Concentration: 1 mg/mL

Buffer: Rabbit IgG in phosphate buffered saline , pH 7.4, 150 mM NaCl, 0.02 % sodium azide and 50 % glycerol.

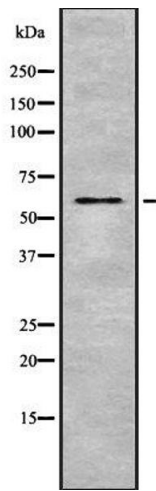
Preservative: Sodium azide

Precaution of Use: This product contains Sodium azide: a POISONOUS AND HAZARDOUS SUBSTANCE which should be handled by trained staff only.

Storage: -20 °C

Storage Comment: Store at -20 °C. Stable for 12 months from date of receipt.

Expiry Date: 12 months



Western Blotting

Image 1. Western blot analysis of EAAT2 using HT29 whole cell lysates