



[Go to Product page](#)

Datasheet for ABIN6261456
anti-KIF11 antibody (C-Term)

2 Images

Overview

| | |
|----------------------|--|
| Quantity: | 100 µL |
| Target: | KIF11 |
| Binding Specificity: | C-Term |
| Reactivity: | Human |
| Host: | Rabbit |
| Clonality: | Polyclonal |
| Conjugate: | This KIF11 antibody is un-conjugated |
| Application: | Western Blotting (WB), ELISA, Immunofluorescence (IF), Immunocytochemistry (ICC) |

Product Details

| | |
|-----------------------|---|
| Immunogen: | A synthesized peptide derived from human Eg5, corresponding to a region within C-terminal amino acids. |
| Isotype: | IgG |
| Specificity: | Eg5 Antibody detects endogenous levels of total Eg5. |
| Predicted Reactivity: | Pig,Horse,Rabbit,Dog |
| Purification: | The antiserum was purified by peptide affinity chromatography using SulfoLink™ Coupling Resin (Thermo Fisher Scientific). |

Target Details

| | |
|---------|-------|
| Target: | KIF11 |
|---------|-------|

Target Details

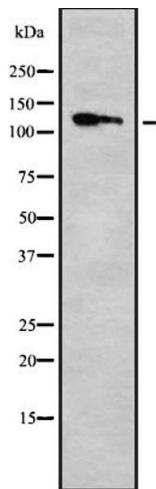
| | |
|-------------------|---|
| Alternative Name: | KIF11 (KIF11 Products) |
| Background: | Description: Motor protein required for establishing a bipolar spindle during mitosis (PubMed:19001501). Required in non-mitotic cells for transport of secretory proteins from the Golgi complex to the cell surface (PubMed:23857769). Gene: KIF11 |
| Molecular Weight: | 119kDa |
| Gene ID: | 3832 |
| UniProt: | P52732 |

Application Details

| | |
|--------------------|---|
| Application Notes: | WB 1:1000, IF/ICC 1:100-1:500, ELISA(peptide) 1:20000-1:40000 |
| Restrictions: | For Research Use only |

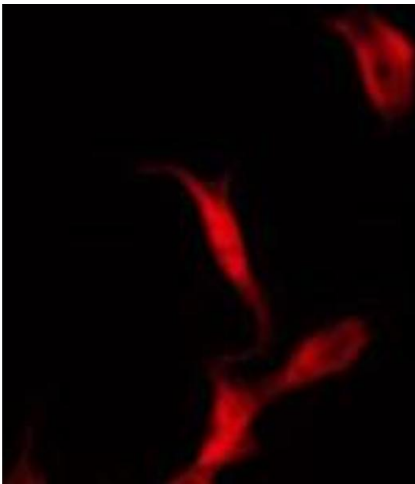
Handling

| | |
|--------------------|--|
| Format: | Liquid |
| Concentration: | 1 mg/mL |
| Buffer: | Rabbit IgG in phosphate buffered saline , pH 7.4, 150 mM NaCl, 0.02 % sodium azide and 50 % glycerol. |
| Preservative: | Sodium azide |
| Precaution of Use: | This product contains Sodium azide: a POISONOUS AND HAZARDOUS SUBSTANCE which should be handled by trained staff only. |
| Storage: | -20 °C |
| Storage Comment: | Store at -20 °C. Stable for 12 months from date of receipt. |
| Expiry Date: | 12 months |



Western Blotting

Image 1. Western blot analysis of Eg5 using COLO205 whole cell lysates



Immunofluorescence (fixed cells)

Image 2. ABIN6272291 staining COLO205 by IF/ICC. The sample were fixed with PFA and permeabilized in 0.1% Triton X-100, then blocked in 10% serum for 45 minutes at 25°C. The primary antibody was diluted at 1/200 and incubated with the sample for 1 hour at 37°C. An Alexa Fluor 594 conjugated goat anti-rabbit IgG (H+L) Ab, diluted at 1/600, was used as the secondary antibody.