

Datasheet for ABIN626146  
**anti-CLDN8 antibody (C-Term)**

## 2 Images

[Go to Product page](#)

## Overview

Quantity:	50 µg
Target:	CLDN8
Binding Specificity:	C-Term
Reactivity:	Rat, Mouse, Dog
Host:	Rabbit
Clonality:	Polyclonal
Application:	Western Blotting (WB), Immunohistochemistry (IHC), Immunofluorescence (IF), Immunohistochemistry (Paraffin-embedded Sections) (IHC (p)), Immunohistochemistry (Frozen Sections) (IHC (fro))

## Product Details

Brand:	IHC-plus™
Immunogen:	Synthetic peptide derived from the C-terminal region of mouse and rat Claudin-8.  Type of Immunogen: Synthetic peptide
Specificity:	Reacts with mouse, rat, and dog Claudin-8. On Western blots, it identifies the target band at ~30kD. Reactivity has been confirmed with TCMK-1 mouse kidney, KNRK rat kidney, and MDCK dog kidney cell lysates by Western blotting, and with ethanol-fixed, frozen mouse colon tissue by immunohistochemistry / immunofluorescence.
Purification:	Immunoaffinity purified

## Target Details

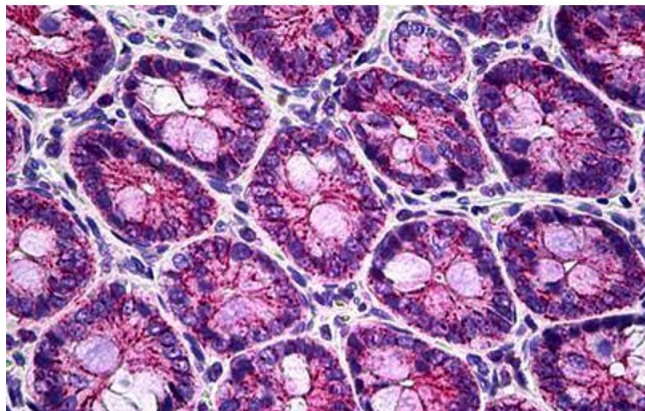
Target:	CLDN8
Alternative Name:	CLDN8 / Claudin 8 ( <a href="#">CLDN8 Products</a> )
Background:	Name/Gene ID: CLDN8 Family: Claudin  Synonyms: CLDN8, Claudin 8, Claudin-8
Gene ID:	9073
UniProt:	<a href="#">P56748</a>
Pathways:	<a href="#">Hepatitis C</a>

## Application Details

Application Notes:	Approved: IF (2.7 µg/mL), IHC, IHC-Fr, IHC-P (10 µg/mL), WB (1 - 3 µg/mL)  Usage: Suitable for use in Immunohistochemistry, Western Blot and Immunofluorescence. Immunohistochemistry (frozen): 2.7 µg/mL. Western Blot: 1-3 µg/mL. Immunofluorescence: 2.7 µg/mL.
Comment:	Target Species of Antibody: Rat
Restrictions:	For Research Use only

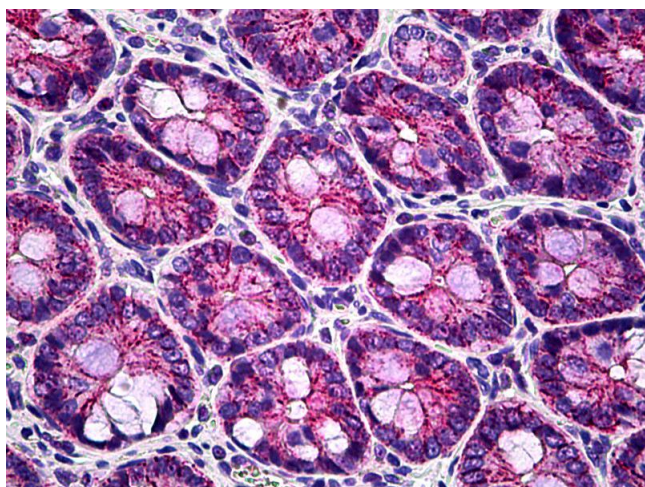
## Handling

Format:	Liquid
Concentration:	Lot specific
Buffer:	PBS, pH 7.4, 0.09 % sodium azide
Preservative:	Sodium azide
Precaution of Use:	This product contains Sodium azide: a POISONOUS AND HAZARDOUS SUBSTANCE which should be handled by trained staff only.
Handling Advice:	Aliquot to Avoid repeated freezing and thawing.
Storage:	4 °C,-20 °C
Storage Comment:	May be stored at 4°C for short-term only. Aliquot to avoid freeze-thaw cycles. Store at -20°C. Aliquots are stable for at least 1 year.



#### Immunohistochemistry (Formalin-fixed Paraffin-embedded Sections)

**Image 1.** Rat Colon: Formalin-Fixed, Paraffin-Embedded (FFPE)



#### Immunohistochemistry

**Image 2.** Anti-CLDN8 / Claudin 8 antibody IHC of rat colon. Immunohistochemistry of formalin-fixed, paraffin-embedded tissue after heat-induced antigen retrieval. Antibody concentration 10 ug/ml.