

Datasheet for ABIN6261472

**anti-EIF2S1 antibody (N-Term)**

4 Images

2 Publications

[Go to Product page](#)

## Overview

Quantity:	100 µL
Target:	EIF2S1
Binding Specificity:	N-Term
Reactivity:	Human, Rat, Mouse, Pig
Host:	Rabbit
Clonality:	Polyclonal
Conjugate:	This EIF2S1 antibody is un-conjugated
Application:	Western Blotting (WB), Immunohistochemistry (IHC), Immunofluorescence (IF), ELISA, Immunocytochemistry (ICC)

## Product Details

Immunogen:	A synthesized peptide derived from human eIF2 alpha, corresponding to a region within N-terminal amino acids.
Isotype:	IgG
Specificity:	EIF2 alpha Antibody detects endogenous levels of total eIF2 alpha.
Predicted Reactivity:	Pig,Bovine,Horse,Sheep,Rabbit,Dog,Chicken,Xenopus
Purification:	The antiserum was purified by peptide affinity chromatography using SulfoLink™ Coupling Resin (Thermo Fisher Scientific).

## Target Details

Target:	EIF2S1
---------	--------

## Target Details

Alternative Name:	EIF2S1 ( <a href="#">EIF2S1 Products</a> )
Background:	<p>Description: Functions in the early steps of protein synthesis by forming a ternary complex with GTP and initiator tRNA. This complex binds to a 40S ribosomal subunit, followed by mRNA binding to form a 43S pre-initiation complex. Junction of the 60S ribosomal subunit to form the 80S initiation complex is preceded by hydrolysis of the GTP bound to eIF-2 and release of an eIF-2-GDP binary complex. In order for eIF-2 to recycle and catalyze another round of initiation, the GDP bound to eIF-2 must exchange with GTP by way of a reaction catalyzed by eIF-2B.</p> <p>Gene: EIF2S1</p>
Molecular Weight:	38kDa
Gene ID:	1965
UniProt:	<a href="#">P05198</a>
Pathways:	<a href="#">Ribonucleoprotein Complex Subunit Organization</a> , <a href="#">ER-Nucleus Signaling</a> , <a href="#">Hepatitis C</a>

## Application Details

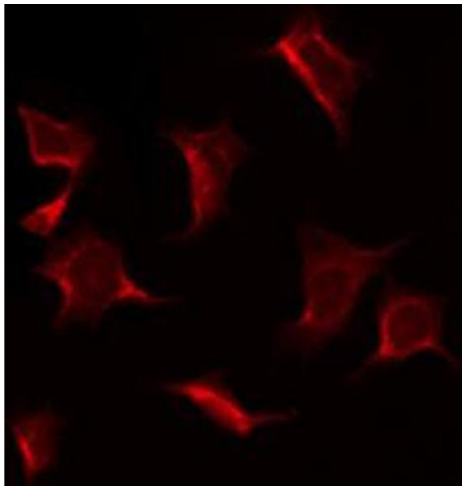
Application Notes:	WB 1:500-1:2000, IHC 1:50-1:200, IF/ICC 1:100-1:500, ELISA(peptide) 1:20000-1:40000
Restrictions:	For Research Use only

## Handling

Format:	Liquid
Concentration:	1 mg/mL
Buffer:	Rabbit IgG in phosphate buffered saline , pH 7.4, 150 mM NaCl, 0.02 % sodium azide and 50 % glycerol.
Preservative:	Sodium azide
Precaution of Use:	This product contains Sodium azide: a POISONOUS AND HAZARDOUS SUBSTANCE which should be handled by trained staff only.
Storage:	-20 °C
Storage Comment:	Store at -20 °C. Stable for 12 months from date of receipt.
Expiry Date:	12 months

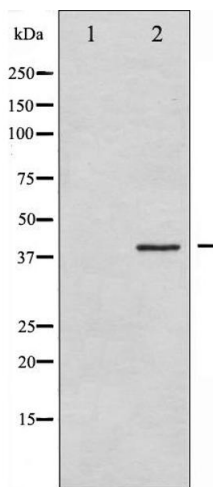
Product cited in: Qian, Zhang, Zhou, Liu, Yue, Guo, Sun, Lv, Chen: "Artesunate enhances  $\gamma\delta$  T-cell-mediated antitumor activity through augmenting  $\gamma\delta$  T-cell function and reversing immune escape of HepG2 cells." in: **Immunopharmacology and immunotoxicology**, Vol. 40, Issue 2, pp. 107-116, (2018) ([PubMed](#)).

Validation report #104221 for Western Blotting (WB)



Immunofluorescence (fixed cells)

**Image 1.** ABIN6269092 staining K562 by IF/ICC. The sample were fixed with PFA and permeabilized in 0.1% Triton X-100, then blocked in 10% serum for 45 minutes at 25°C. The primary antibody was diluted at 1/200 and incubated with the sample for 1 hour at 37°C. An Alexa Fluor 594 conjugated goat anti-rabbit IgG (H+L) Ab, diluted at 1/600, was used as the secondary antibody.

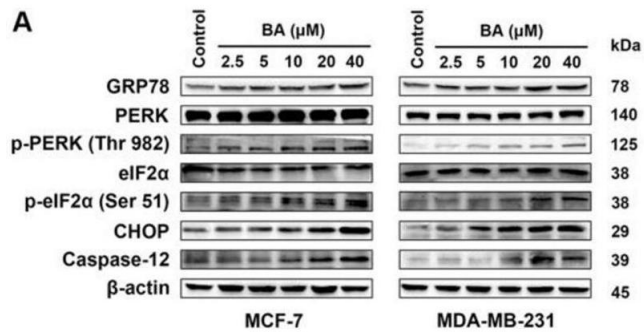


Western Blotting

**Image 2.** Western blot analysis of eIF2 alpha expression in IFN- $\alpha$  treated K562 whole cell lysates, The lane on the left is treated with the antigen-specific peptide.

Western Blotting

**Image 3.** MCF-7 and MDA-MB-231 cells were treated with the indicated concentrations of BA for 24 h, and the protein levels of ER stress-associated signals were stimulated by BA in a dose-dependent manner, including GRP78, p-PERK/PERK, p-eIF2α/eIF2α, CHOP, and caspase-12.



Please check the [product details page](#) for more images. Overall 4 images are available for ABIN6261472.