

Datasheet for ABIN6261479
anti-EIF2C3 antibody (Internal Region)[Go to Product page](#)

2 Images

Overview

Quantity:	100 µL
Target:	EIF2C3
Binding Specificity:	Internal Region
Reactivity:	Human, Mouse, Rat
Host:	Rabbit
Clonality:	Polyclonal
Conjugate:	This EIF2C3 antibody is un-conjugated
Application:	Western Blotting (WB), ELISA, Immunohistochemistry (IHC)

Product Details

Immunogen:	A synthesized peptide derived from human EIF2C3, corresponding to a region within the internal amino acids.
Isotype:	IgG
Specificity:	EIF2C3 Antibody detects endogenous levels of total EIF2C3.
Predicted Reactivity:	Zebrafish,Bovine,Sheep,Rabbit,Dog,Chicken
Purification:	The antiserum was purified by peptide affinity chromatography using SulfoLink™ Coupling Resin (Thermo Fisher Scientific).

Target Details

Target:	EIF2C3
---------	--------

Target Details

Alternative Name:	AGO3 (EIF2C3 Products)
Background:	<p>Description: Required for RNA-mediated gene silencing (RNAi). Binds to short RNAs such as microRNAs (miRNAs) and represses the translation of mRNAs which are complementary to them. Lacks endonuclease activity and does not appear to cleave target mRNAs. Proposed to be involved in stabilization of small RNA derivatives (siRNA) derived from processed RNA polymerase III-transcribed Alu repeats containing a DR2 retinoic acid response element (RARE) in stem cells and in the subsequent siRNA-dependent degradation of a subset of RNA polymerase II-transcribed coding mRNAs by recruiting a mRNA decapping complex involving EDC4.</p> <p>Gene: AGO3</p>
Molecular Weight:	97 kDa
Gene ID:	192669
UniProt:	Q9H9G7
Pathways:	Fc-epsilon Receptor Signaling Pathway , Regulatory RNA Pathways , EGFR Signaling Pathway , Neurotrophin Signaling Pathway

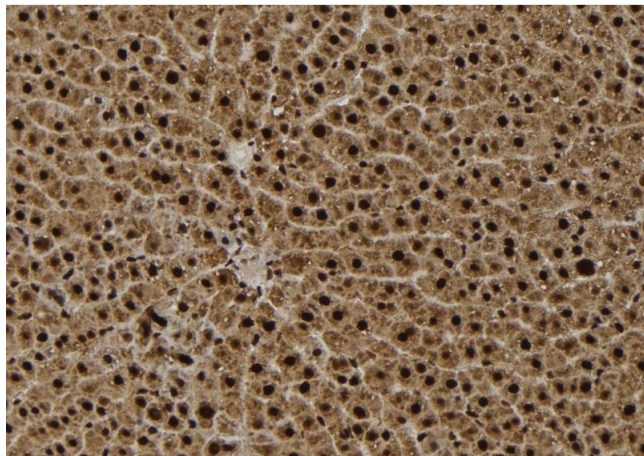
Application Details

Application Notes:	WB 1:1000-3000, IHC 1:200, ELISA(peptide) 1:20000-1:40000
Restrictions:	For Research Use only

Handling

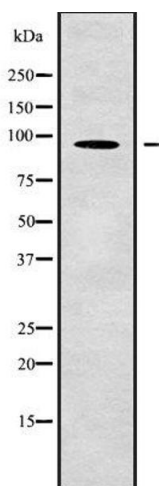
Format:	Liquid
Concentration:	1 mg/mL
Buffer:	Rabbit IgG in phosphate buffered saline , pH 7.4, 150 mM NaCl, 0.02 % sodium azide and 50 % glycerol.
Preservative:	Sodium azide
Precaution of Use:	This product contains Sodium azide: a POISONOUS AND HAZARDOUS SUBSTANCE which should be handled by trained staff only.
Storage:	-20 °C
Storage Comment:	Store at -20 °C. Stable for 12 months from date of receipt.

Expiry Date: 12 months



Immunohistochemistry

Image 1. ABIN6279420 at 1/100 staining Rat liver tissue by IHC-P. The sample was formaldehyde fixed and a heat mediated antigen retrieval step in citrate buffer was performed. The sample was then blocked and incubated with the antibody for 1.5 hours at 22°C. An HRP conjugated goat anti-rabbit antibody was used as the secondary



Western Blotting

Image 2. Western blot analysis of EIF2C3 using COLO205 whole cell lysates