

Datasheet for ABIN6261509

**anti-ELAV2/4 antibody****3** Images[Go to Product page](#)

## Overview

Quantity:	100 µL
Target:	ELAV2/4
Reactivity:	Human, Mouse, Rat
Host:	Rabbit
Clonality:	Polyclonal
Conjugate:	This ELAV2/4 antibody is un-conjugated
Application:	ELISA, Western Blotting (WB), Immunofluorescence (IF), Immunocytochemistry (ICC)

## Product Details

Immunogen:	A synthesized peptide derived from human ELAV2/4
Isotype:	IgG
Specificity:	ELAV2/4 Antibody detects endogenous levels of total ELAV2/4
Cross-Reactivity:	Human, Mouse (Murine), Rat (Rattus)
Purification:	The antiserum was purified by peptide affinity chromatography using SulfoLink™ Coupling Resin (Thermo Fisher Scientific).

## Target Details

Target:	ELAV2/4
Alternative Name:	ELAV2/4 ( <a href="#">ELAV2/4 Products</a> )
Background:	Description: Binds RNA. Seems to recognize a GAAA motif. Can bind to its own 3'-UTR, the FOS

## Target Details

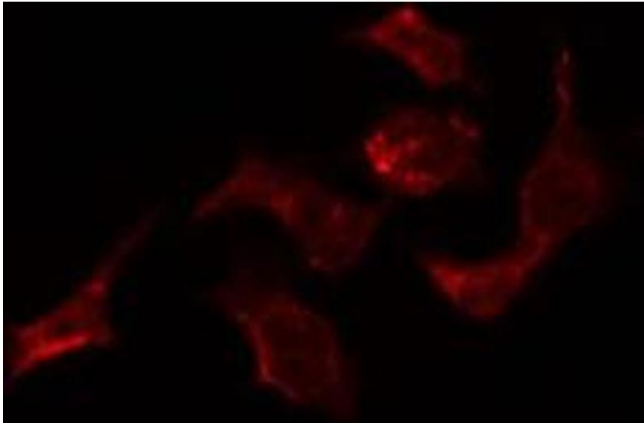
	3'-UTR and the ID 3'-UTR. Gene: ELAVL2
Molecular Weight:	39 kDa
Gene ID:	1993
UniProt:	<a href="#">Q12926</a> , <a href="#">P26378</a>

## Application Details

Application Notes:	WB 1:1000-3000, IF/ICC 1:100-1:500
Restrictions:	For Research Use only

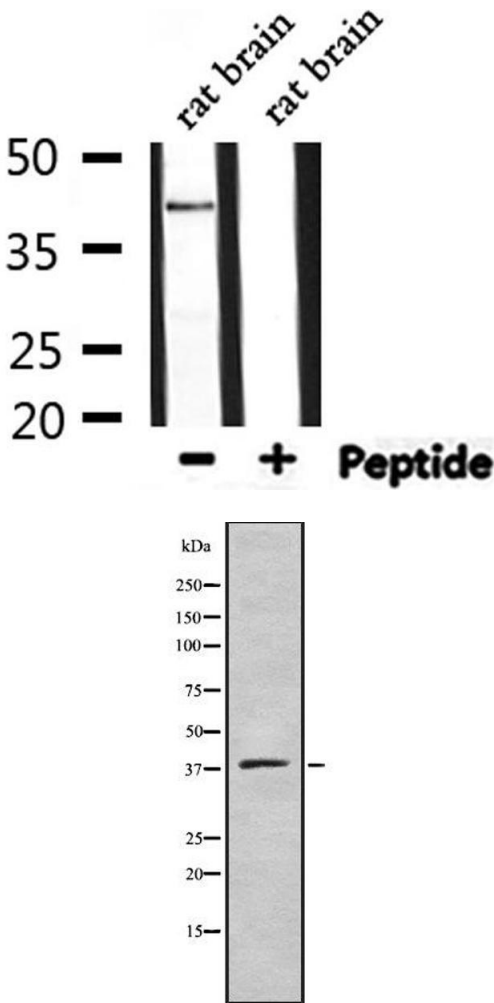
## Handling

Format:	Liquid
Concentration:	1 mg/mL
Buffer:	Rabbit IgG in phosphate buffered saline , pH 7.4, 150 mM NaCl, 0.02 % sodium azide and 50 % glycerol.
Preservative:	Sodium azide
Precaution of Use:	This product contains Sodium azide: a POISONOUS AND HAZARDOUS SUBSTANCE which should be handled by trained staff only.
Storage:	-20 °C
Storage Comment:	Store at -20 °C.Stable for 12 months from date of receipt
Expiry Date:	12 months



#### Immunofluorescence (fixed cells)

**Image 1.** ABIN6278567 staining HepG2 by IF/ICC. The sample were fixed with PFA and permeabilized in 0.1% Triton X-100, then blocked in 10% serum for 45 minutes at 25°C. The primary antibody was diluted at 1/200 and incubated with the sample for 1 hour at 37°C. An Alexa Fluor 594 conjugated goat anti-rabbit IgG (H+L) Ab, diluted at 1/600, was used as the secondary antibody



#### Western Blotting

**Image 2.** Western blot analysis of extracts from rat brain, using ELAV2/4 Antibody.

#### Western Blotting

**Image 3.** Western blot analysis of ELAV2/4 using COLO205 whole cell lysates