

Datasheet for ABIN6261515
anti-ELMO1 antibody



[Go to Product page](#)

3 Images

Overview

Quantity:	100 µL
Target:	ELMO1
Reactivity:	Human, Mouse, Rat
Host:	Rabbit
Clonality:	Polyclonal
Conjugate:	This ELMO1 antibody is un-conjugated
Application:	Western Blotting (WB), ELISA, Immunocytochemistry (ICC), Immunofluorescence (IF)

Product Details

Immunogen:	A synthesized peptide derived from human Elmo1
Isotype:	IgG
Specificity:	Elmo1 Antibody detects endogenous levels of total Elmo1
Cross-Reactivity:	Human, Mouse (Murine), Rat (Rattus)
Purification:	The antiserum was purified by peptide affinity chromatography using SulfoLink™ Coupling Resin (Thermo Fisher Scientific).

Target Details

Target:	ELMO1
Alternative Name:	Elmo1 (ELMO1 Products)
Background:	Description: Involved in cytoskeletal rearrangements required for phagocytosis of apoptotic

Target Details

cells and cell motility. Acts in association with DOCK1 and CRK. Was initially proposed to be required in complex with DOCK1 to activate Rac Rho small GTPases. May enhance the guanine nucleotide exchange factor (GEF) activity of DOCK1.

Gene: ELMO1

Molecular Weight: 83 kDa

Gene ID: 9844

UniProt: [Q92556](#)

Application Details

Application Notes: WB 1:1000-3000, IF/ICC 1:100-1:500

Restrictions: For Research Use only

Handling

Format: Liquid

Concentration: 1 mg/mL

Buffer: Rabbit IgG in phosphate buffered saline , pH 7.4, 150 mM NaCl, 0.02 % sodium azide and 50 % glycerol.

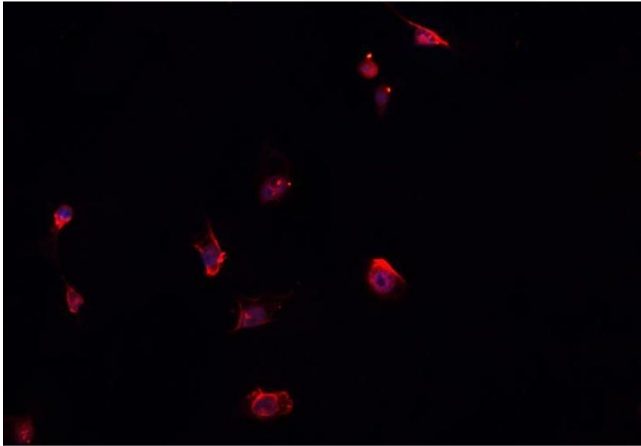
Preservative: Sodium azide

Precaution of Use: This product contains Sodium azide: a POISONOUS AND HAZARDOUS SUBSTANCE which should be handled by trained staff only.

Storage: -20 °C

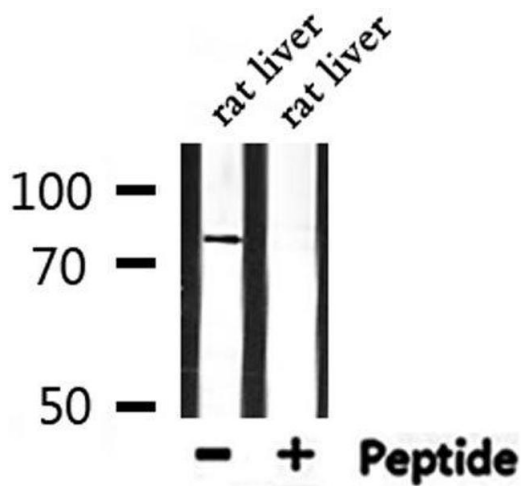
Storage Comment: Store at -20 °C. Stable for 12 months from date of receipt

Expiry Date: 12 months



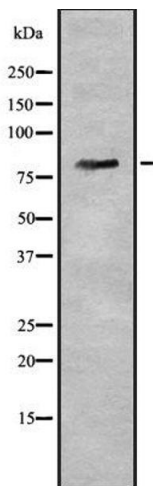
Immunofluorescence (fixed cells)

Image 1. ABIN6278456 staining HepG2 cells by IF/ICC. The sample were fixed with PFA and permeabilized in 0.1% Triton X-100, then blocked in 10% serum for 45 minutes at 25°C. The primary antibody was diluted at 1/200 and incubated with the sample for 1 hour at 37°C. An Alexa Fluor 594 conjugated goat anti-rabbit IgG (H+L) antibody (Cat.# S0006), diluted at 1/600, was used as secondary antibody



Western Blotting

Image 2. Western blot analysis of extracts from rat liver, using Elmo1 Antibody.



Western Blotting

Image 3. Western blot analysis of Elmo1 using COS7 whole cell lysates