

Datasheet for ABIN626152  
**anti-GJB2 antibody (Cytoplasmic Domain)**

## 2 Images

[Go to Product page](#)

## Overview

Quantity:	50 µg
Target:	GJB2
Binding Specificity:	Cytoplasmic Domain
Reactivity:	Human, Mouse, Rat
Host:	Mouse
Clonality:	Monoclonal
Application:	Western Blotting (WB), ELISA, Immunohistochemistry (IHC), Immunohistochemistry (Paraffin-embedded Sections) (IHC (p)), Immunohistochemistry (Frozen Sections) (IHC (fro))

## Product Details

Brand:	IHC-plus™
Immunogen:	Synthetic peptide corresponding to a segment of the cytoplasmic loop of rat Connexin-26. (4,5).  Type of Immunogen: Synthetic peptide
Clone:	CX-12H10
Isotype:	IgG1 kappa
Specificity:	Reacts strongly with Connexin-26, which has a predicted molecular weight of 26.5kD. Although the polyclonal anti-Cx26 antibody (feline. No. 71-0500) raised against the same sequence as this monoclonal anti-Cx26 antibody cross-reacts with Cx30, this monoclonal anti-Cx26 appears to exhibit minimal cross-reaction with Cx30 by western blotting. The degree of cross-reaction with Cx30 by IHC is uncertain, but may be influenced by fixation conditions. Rat, mouse and

## Product Details

human. Reactivity of this antibody on Western blots has been confirmed by using extracts from mouse liver, mouse brain and rat brain.

Purification: Immunoaffinity purified

## Target Details

Target: GJB2

Alternative Name: GJB2 / CX26 / Connexin 26 ([GJB2 Products](#))

Background: Name/Gene ID: GJB2

Subfamily: Connexin

Family: Ion Channel

Synonyms: GJB2, Connexin 26, Connexin-26, DFNB1A, DFNA3, DFNB1, Gap junction protein beta 2, KID, HID, PPK, NSRD1, CX26, DFNA3A

Gene ID: 2706

UniProt: [P29033](#)

Pathways: [Sensory Perception of Sound](#), [Cell-Cell Junction Organization](#)

## Application Details

Application Notes: Approved: ELISA (0.1 - 1 µg/mL), IHC, IHC-Fr, IHC-P (10 µg/mL), WB (1 µg/mL)

Usage: Suitable for use in ELISA, Western Blot and Immunohistochemistry. ELISA: 0.1-1 µg/mL. Immunohistochemistry (Frozen): 1-2 µg/mL. Western Blot: 1 µg/mL. Reactivity confirmed using extracts from mouse liver, mouse brain and rat brain.

Comment: Target Species of Antibody: Rat

Restrictions: For Research Use only

## Handling

Format: Liquid

Concentration: Lot specific

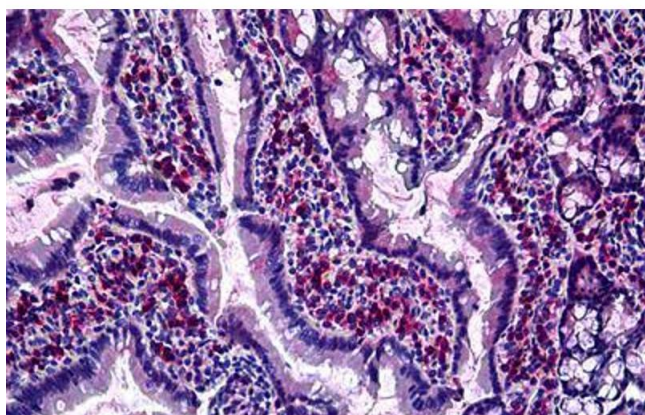
Buffer: PBS, pH 7.4, 0.09 % sodium azide.

Preservative: Sodium azide

## Handling

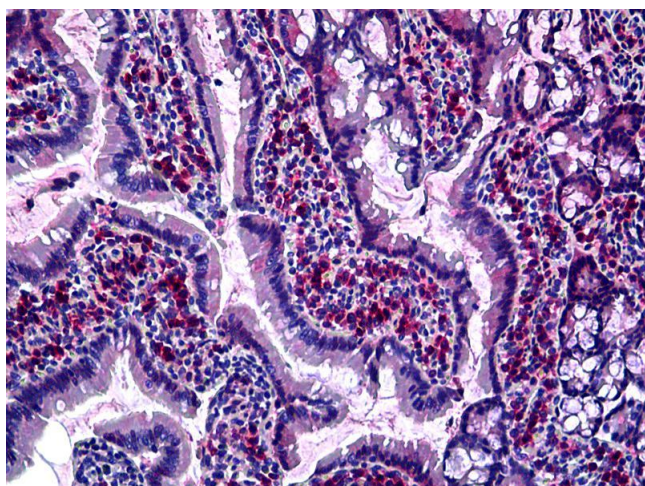
Precaution of Use:	This product contains Sodium azide: a POISONOUS AND HAZARDOUS SUBSTANCE which should be handled by trained staff only.
Handling Advice:	Aliquot to Avoid repeated freezing and thawing.
Storage:	4 °C,-20 °C
Storage Comment:	May be stored at 4°C for short-term only. Aliquot to avoid freeze-thaw cycles. Store at -20°C. Aliquots are stable for at least 1 year.

## Images



### Immunohistochemistry (Formalin-fixed Paraffin-embedded Sections)

**Image 1.** Rat Intestine: Formalin-Fixed, Paraffin-Embedded (FFPE)



### Immunohistochemistry

**Image 2.** Anti-GJB2 antibody IHC of rat intestine. Immunohistochemistry of formalin-fixed, paraffin-embedded tissue after heat-induced antigen retrieval. Antibody concentration 10 ug/ml.