

Datasheet for ABIN6261520  
**anti-ELOVL2 antibody (N-Term)**[Go to Product page](#)

## 1 Image

## Overview

Quantity:	100 µL
Target:	ELOVL2
Binding Specificity:	N-Term
Reactivity:	Human
Host:	Rabbit
Clonality:	Polyclonal
Conjugate:	This ELOVL2 antibody is un-conjugated
Application:	ELISA, Western Blotting (WB)

## Product Details

Immunogen:	A synthesized peptide derived from human ELOVL2, corresponding to a region within N-terminal amino acids.
Isotype:	IgG
Specificity:	ELOVL2 Antibody detects endogenous levels of total ELOVL2.
Predicted Reactivity:	Zebrafish,Horse,Rabbit,Dog,Xenopus
Purification:	The antiserum was purified by peptide affinity chromatography using SulfoLink™ Coupling Resin (Thermo Fisher Scientific).

## Target Details

Target:	ELOVL2
---------	--------

## Target Details

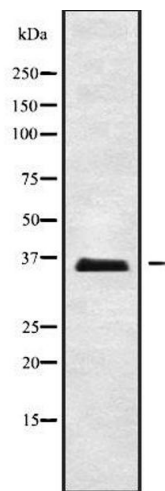
Alternative Name:	ELOVL2 ( <a href="#">ELOVL2 Products</a> )
Background:	<p>Description: Catalyzes the first and rate-limiting reaction of the four that constitute the long-chain fatty acids elongation cycle. This endoplasmic reticulum-bound enzymatic process, allows the addition of 2 carbons to the chain of long- and very long-chain fatty acids/VLCFAs per cycle. Acts specifically toward polyunsaturated acyl-CoA with the higher activity toward C20:4(n-6) acyl-CoA. Condensing enzyme that catalyzes the synthesis of polyunsaturated very long chain fatty acid (C20- and C22-PUFA). May participate in the production of polyunsaturated VLCFAs of different chain lengths that are involved in multiple biological processes as precursors of membrane lipids and lipid mediators.</p> <p>Gene: ELOVL2</p>
Molecular Weight:	35 kDa
Gene ID:	54898
UniProt:	<a href="#">Q9NXB9</a>

## Application Details

Application Notes:	WB 1:1000-3000, ELISA(peptide) 1:20000-1:40000
Restrictions:	For Research Use only

## Handling

Format:	Liquid
Concentration:	1 mg/mL
Buffer:	Rabbit IgG in phosphate buffered saline , pH 7.4, 150 mM NaCl, 0.02 % sodium azide and 50 % glycerol.
Preservative:	Sodium azide
Precaution of Use:	This product contains Sodium azide: a POISONOUS AND HAZARDOUS SUBSTANCE which should be handled by trained staff only.
Storage:	-20 °C
Storage Comment:	Store at -20 °C. Stable for 12 months from date of receipt.
Expiry Date:	12 months



Western Blotting

**Image 1.** Western blot analysis of ELOVL2 using COL0205 whole cell lysates