



[Go to Product page](#)

Datasheet for ABIN6261522

anti-ELP3/KAT9 antibody (Internal Region)

1 Image

Overview

Quantity:	100 µL
Target:	ELP3/KAT9 (ELP3)
Binding Specificity:	Internal Region
Reactivity:	Human, Mouse, Rat
Host:	Rabbit
Clonality:	Polyclonal
Conjugate:	This ELP3/KAT9 antibody is un-conjugated
Application:	Western Blotting (WB), ELISA, Immunohistochemistry (IHC)

Product Details

Immunogen:	A synthesized peptide derived from human ELP3, corresponding to a region within the internal amino acids.
Isotype:	IgG
Specificity:	ELP3 Antibody detects endogenous levels of total ELP3.
Predicted Reactivity:	Pig,Zebrafish,Bovine,Horse,Sheep,Rabbit,Dog,Chicken,Xenopus
Purification:	The antiserum was purified by peptide affinity chromatography using SulfoLink™ Coupling Resin (Thermo Fisher Scientific).

Target Details

Target:	ELP3/KAT9 (ELP3)
---------	------------------

Target Details

Alternative Name: [ELP3 \(ELP3 Products\)](#)

Background: Description: Catalytic histone acetyltransferase subunit of the RNA polymerase II elongator complex, which is a component of the RNA polymerase II (Pol II) holoenzyme and is involved in transcriptional elongation. Elongator may play a role in chromatin remodeling and is involved in acetylation of histones H3 and probably H4. Involved in acetylation of alpha-tubulin (PubMed:19185337). May also have a methyltransferase activity. Involved in cell migration. Involved in neurogenesis. Regulates the migration and branching of projection neurons in the developing cerebral cortex, through a process depending on alpha-tubulin acetylation.

Gene: ELP3

Molecular Weight: 62 kDa

Gene ID: 55140

UniProt: [Q9H9T3](#)

Application Details

Application Notes: WB 1:1000-3000, IHC 1:50-1:200, ELISA(peptide) 1:20000-1:40000

Restrictions: For Research Use only

Handling

Format: Liquid

Concentration: 1 mg/mL

Buffer: Rabbit IgG in phosphate buffered saline , pH 7.4, 150 mM NaCl, 0.02 % sodium azide and 50 % glycerol.

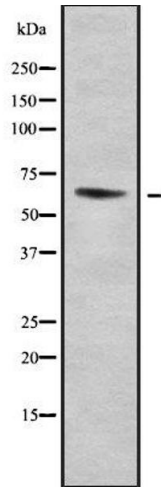
Preservative: Sodium azide

Precaution of Use: This product contains Sodium azide: a POISONOUS AND HAZARDOUS SUBSTANCE which should be handled by trained staff only.

Storage: -20 °C

Storage Comment: Store at -20 °C. Stable for 12 months from date of receipt.

Expiry Date: 12 months



Western Blotting

Image 1. Western blot analysis of ELP3 using HuvEc whole cell lysates