



[Go to Product page](#)

Datasheet for ABIN6261615
anti-ETFDH antibody (C-Term)

3 Images

Overview

| | |
|----------------------|---|
| Quantity: | 100 µL |
| Target: | ETFDH |
| Binding Specificity: | C-Term |
| Reactivity: | Human, Mouse, Rat |
| Host: | Rabbit |
| Clonality: | Polyclonal |
| Conjugate: | This ETFDH antibody is un-conjugated |
| Application: | Western Blotting (WB), Immunohistochemistry (IHC), Immunocytochemistry (ICC), Immunofluorescence (IF) |

Product Details

| | |
|-----------------------|---|
| Immunogen: | A synthesized peptide derived from human ETFDH, corresponding to a region within C-terminal amino acids. |
| Isotype: | IgG |
| Specificity: | ETFDH Antibody detects endogenous levels of total ETFDH. |
| Predicted Reactivity: | Pig,Zebrafish,Bovine,Horse,Sheep,Rabbit,Dog,Xenopus |
| Purification: | The antiserum was purified by peptide affinity chromatography using SulfoLink™ Coupling Resin (Thermo Fisher Scientific). |

Target Details

| | |
|---------|-------|
| Target: | ETFDH |
|---------|-------|

Target Details

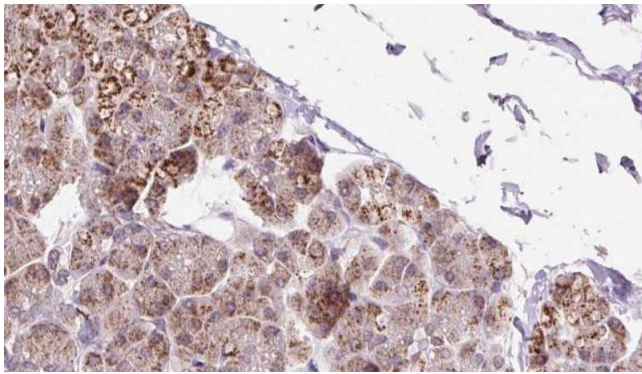
| | |
|-------------------|--|
| Alternative Name: | ETFDH (ETFDH Products) |
| Background: | Description: Accepts electrons from ETF and reduces ubiquinone. Gene: ETFDH |
| Molecular Weight: | 64 kDa |
| Gene ID: | 2110 |
| UniProt: | Q16134 |
| Pathways: | Monocarboxylic Acid Catabolic Process |

Application Details

| | |
|--------------------|---|
| Application Notes: | WB 1:500-1:2000, IHC 1:50-1:200, IF/ICC 1:100-1:500 |
| Restrictions: | For Research Use only |

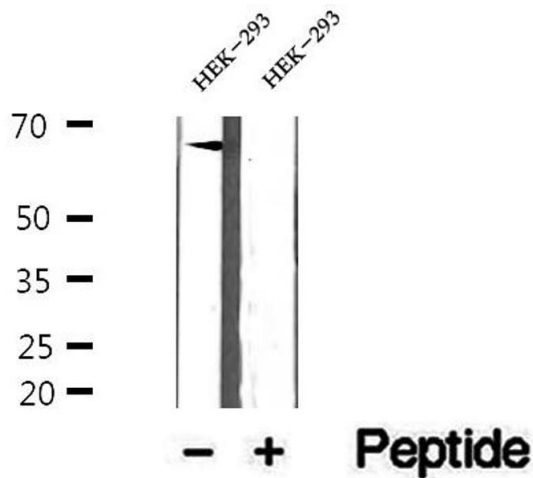
Handling

| | |
|--------------------|--|
| Format: | Liquid |
| Concentration: | 1 mg/mL |
| Buffer: | Rabbit IgG in phosphate buffered saline , pH 7.4, 150 mM NaCl, 0.02 % sodium azide and 50 % glycerol. |
| Preservative: | Sodium azide |
| Precaution of Use: | This product contains Sodium azide: a POISONOUS AND HAZARDOUS SUBSTANCE which should be handled by trained staff only. |
| Storage: | -20 °C |
| Storage Comment: | Store at -20 °C. Stable for 12 months from date of receipt. |
| Expiry Date: | 12 months |



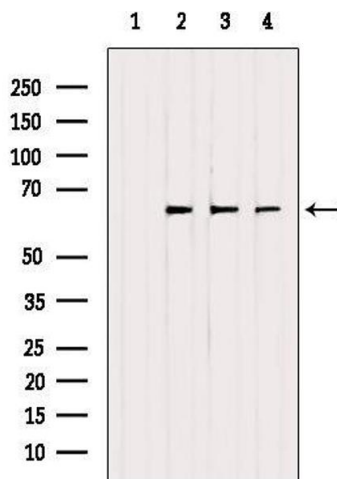
Immunohistochemistry

Image 1. ABIN6273239 at 1/100 staining Human pancreas cancer tissue by IHC-P. The sample was formaldehyde fixed and a heat mediated antigen retrieval step in citrate buffer was performed. The sample was then blocked and incubated with the antibody for 1.5 hours at 22°C. An HRP conjugated goat anti-rabbit antibody was used as the secondary.



Western Blotting

Image 2. Western blot analysis of extracts of HEK-293 cells, using ETFDH antibody.



Western Blotting

Image 3. Western blot analysis of extracts from various samples, using ETFDH Antibody. Lane 1: Mouse lung treated with blocking peptide; Lane 2: Mouse lung; Lane 3: Mouse brain; Lane 4: Hybridoma cells.