



[Go to Product page](#)

Datasheet for ABIN6261624  
**anti-EVL antibody (Internal Region)**

1 Image

Overview

Quantity:	100 µL
Target:	EVL
Binding Specificity:	Internal Region
Reactivity:	Human, Mouse, Rat
Host:	Rabbit
Clonality:	Polyclonal
Conjugate:	This EVL antibody is un-conjugated
Application:	Western Blotting (WB), ELISA, Immunohistochemistry (IHC)

Product Details

Immunogen:	A synthesized peptide derived from human EVL, corresponding to a region within the internal amino acids.
Isotype:	IgG
Specificity:	EVL Antibody detects endogenous levels of total EVL.
Predicted Reactivity:	Pig,Bovine,Horse,Dog
Purification:	The antiserum was purified by peptide affinity chromatography using SulfoLink™ Coupling Resin (Thermo Fisher Scientific).

Target Details

Target:	EVL
---------	-----

## Target Details

---

Alternative Name:	EVL ( <a href="#">EVL Products</a> )
Background:	Description: Ena/VASP proteins are actin-associated proteins involved in a range of processes dependent on cytoskeleton remodeling and cell polarity such as axon guidance and lamellipodial and filopodial dynamics in migrating cells. EVL enhances actin nucleation and polymerization. Gene: EVL
Molecular Weight:	50 kDa
Gene ID:	51466
UniProt:	<a href="#">Q9UI08</a>

## Application Details

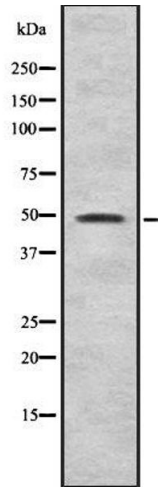
---

Application Notes:	WB 1:1000-3000, IHC 1:50-1:200, ELISA(peptide) 1:20000-1:40000
Restrictions:	For Research Use only

## Handling

---

Format:	Liquid
Concentration:	1 mg/mL
Buffer:	Rabbit IgG in phosphate buffered saline , pH 7.4, 150 mM NaCl, 0.02 % sodium azide and 50 % glycerol.
Preservative:	Sodium azide
Precaution of Use:	This product contains Sodium azide: a POISONOUS AND HAZARDOUS SUBSTANCE which should be handled by trained staff only.
Storage:	-20 °C
Storage Comment:	Store at -20 °C. Stable for 12 months from date of receipt.
Expiry Date:	12 months



### Western Blotting

**Image 1.** Western blot analysis of EVL using HeLa whole cell lysates