

Datasheet for ABIN6261628

anti-EXT1 antibody**3** Images[Go to Product page](#)

Overview

Quantity:	100 µL
Target:	EXT1
Reactivity:	Human, Mouse, Rat
Host:	Rabbit
Clonality:	Polyclonal
Conjugate:	This EXT1 antibody is un-conjugated
Application:	Western Blotting (WB), ELISA, Immunohistochemistry (IHC)

Product Details

Immunogen:	A synthesized peptide derived from human EXT1
Isotype:	IgG
Specificity:	EXT1 Antibody detects endogenous levels of total EXT1
Cross-Reactivity:	Human, Mouse (Murine), Rat (Rattus)
Purification:	The antiserum was purified by peptide affinity chromatography using SulfoLink™ Coupling Resin (Thermo Fisher Scientific).

Target Details

Target:	EXT1
Alternative Name:	EXT1 (EXT1 Products)
Background:	Description: Glycosyltransferase required for the biosynthesis of heparan-sulfate. The

Target Details

EXT1/EXT2 complex possesses substantially higher glycosyltransferase activity than EXT1 or EXT2 alone. Appears to be a tumor suppressor. Required for the exosomal release of SDCBP, CD63 and syndecan (PubMed:22660413).

Gene: EXT1

Molecular Weight: 86kDa

Gene ID: 2131

UniProt: [Q16394](#)

Pathways: [Glycosaminoglycan Metabolic Process](#)

Application Details

Application Notes: WB 1:500-1:2000 IHC 1:50-1:200

Restrictions: For Research Use only

Handling

Format: Liquid

Concentration: 1 mg/mL

Buffer: Rabbit IgG in phosphate buffered saline , pH 7.4, 150 mM NaCl, 0.02 % sodium azide and 50 % glycerol.

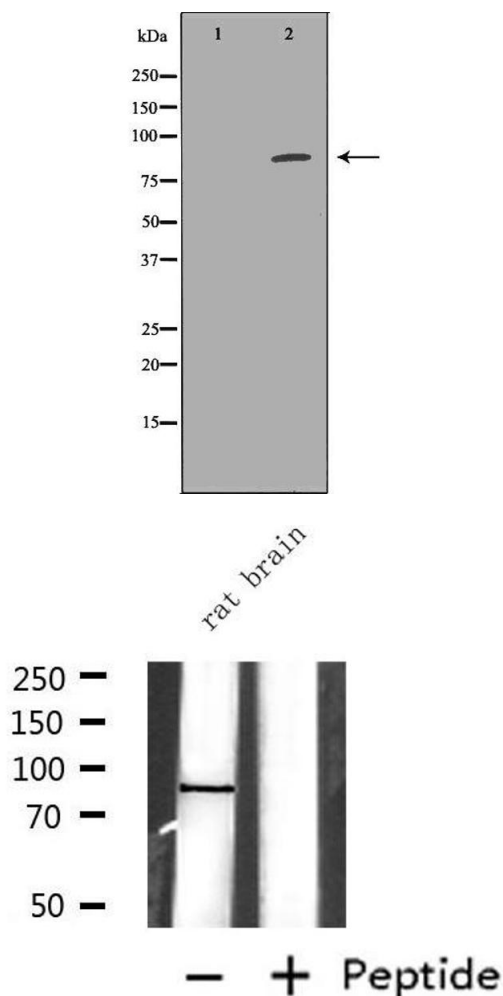
Preservative: Sodium azide

Precaution of Use: This product contains Sodium azide: a POISONOUS AND HAZARDOUS SUBSTANCE which should be handled by trained staff only.

Storage: -20 °C

Storage Comment: Store at -20 °C.Stable for 12 months from date of receipt

Expiry Date: 12 months



Western Blotting

Image 1. Western blot analysis of HepG2 cell lysate, using EXT1 Antibody. The lane on the left is treated with the antigen-specific peptide.

Western Blotting

Image 2. Western blot analysis of extracts from rat brain, using EXT1 Antibody.

Immunohistochemistry

Image 3. ABIN6277027 at 1/100 staining Human breast cancer tissue by IHC-P. The sample was formaldehyde fixed and a heat mediated antigen retrieval step in citrate buffer was performed. The sample was then blocked and incubated with the antibody for 1.5 hours at 22°C. An HRP conjugated goat anti-rabbit antibody was used as the secondary

