



[Go to Product page](#)

Datasheet for ABIN626165

anti-Retinoic Acid Receptor alpha antibody (AA 1-463)

2 Images

Overview

Quantity:	50 µg
Target:	Retinoic Acid Receptor alpha (RARA)
Binding Specificity:	AA 1-463
Reactivity:	Human
Host:	Mouse
Clonality:	Monoclonal
Application:	Western Blotting (WB), Immunohistochemistry (IHC), ELISA, Immunofluorescence (IF), Immunohistochemistry (Paraffin-embedded Sections) (IHC (p))

Product Details

Brand:	IHC-plus™
Immunogen:	RARA (AAH08727, 1 a.a. ~ 463 a.a) full length recombinant protein with GST tag. MW of the GST tag alone is 26 KDa. Type of Immunogen: Recombinant protein
Clone:	2C9-1F8
Isotype:	IgG2a kappa
Specificity:	Human RARA
Purification:	Purified from ascites by Protein A

Target Details

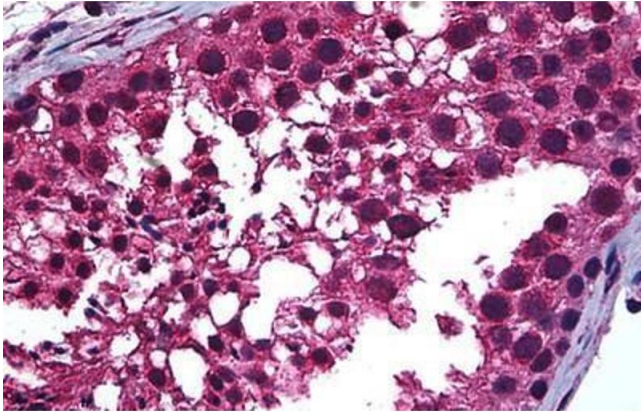
Target:	Retinoic Acid Receptor alpha (RARA)
Alternative Name:	RARA / RAR Alpha (RARA Products)
Background:	Name/Gene ID: RARA Subfamily: NR1 Thyroid hormone-like Family: NHR Synonyms: RARA, NR1B1, PML-RAR, RAR-alpha, RARalpha, Retinoic acid receptor alpha, Pml-rara, RAR, RAR alpha, Retinoic acid receptor, alpha
Gene ID:	5914
UniProt:	P10276
Pathways:	Nuclear Receptor Transcription Pathway , Retinoic Acid Receptor Signaling Pathway , Intracellular Steroid Hormone Receptor Signaling Pathway , Steroid Hormone Mediated Signaling Pathway , Cellular Response to Molecule of Bacterial Origin , Positive Regulation of Immune Effector Process , S100 Proteins

Application Details

Application Notes:	Approved: ELISA, IF (10 µg/mL), IHC, IHC-P (5 µg/mL), WB Usage: Immunohistochemistry: Formalin-fixed paraffin-embedded sections. Sandwich ELISA: Recombinant protein. Western Blot using cell line lysates and the recombinant protein used as the immunogen.
Comment:	Target Species of Antibody: Human
Restrictions:	For Research Use only

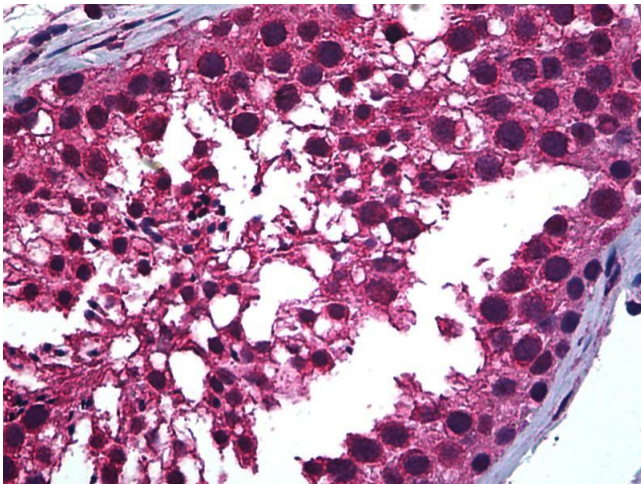
Handling

Format:	Liquid
Concentration:	Lot specific
Buffer:	PBS, pH 7.4. Sourced in Ascites.
Handling Advice:	Aliquot to Avoid repeated freezing and thawing.
Storage:	-20 °C
Storage Comment:	Store at -20°C or lower. Aliquot to avoid freeze-thaw cycles.



Immunohistochemistry (Formalin-fixed Paraffin-embedded Sections)

Image 1. Human Testis: Formalin-Fixed, Paraffin-Embedded (FFPE)



Immunohistochemistry

Image 2. Anti-RARA antibody IHC of human testis. Immunohistochemistry of formalin-fixed, paraffin-embedded tissue after heat-induced antigen retrieval. Antibody concentration 5 ug/ml.