



[Go to Product page](#)

Datasheet for ABIN6261667

anti-FAM160B2 antibody (Internal Region)

2 Images

Overview

Quantity:	100 µL
Target:	FAM160B2
Binding Specificity:	Internal Region
Reactivity:	Human, Mouse, Rat
Host:	Rabbit
Clonality:	Polyclonal
Conjugate:	This FAM160B2 antibody is un-conjugated
Application:	Western Blotting (WB), Immunohistochemistry (IHC), ELISA

Product Details

Immunogen:	A synthesized peptide derived from human FAM160B2, corresponding to a region within the internal amino acids.
Isotype:	IgG
Specificity:	FAM160B2 Antibody detects endogenous levels of total FAM160B2.
Predicted Reactivity:	Pig,Bovine,Horse,Sheep,Rabbit,Dog
Purification:	The antiserum was purified by peptide affinity chromatography using SulfoLink™ Coupling Resin (Thermo Fisher Scientific).

Target Details

Target:	FAM160B2
---------	----------

Target Details

Alternative Name: FAM160B2 ([FAM160B2 Products](#))

Background: Gene: FAM160B2

Molecular Weight: 82kDa

Gene ID: 64760

UniProt: [Q86V87](#)

Application Details

Application Notes: WB 1:500-1:2000, IHC 1:50-1:200, ELISA(peptide) 1:20000-1:40000

Restrictions: For Research Use only

Handling

Format: Liquid

Concentration: 1 mg/mL

Buffer: Rabbit IgG in phosphate buffered saline , pH 7.4, 150 mM NaCl, 0.02 % sodium azide and 50 % glycerol.

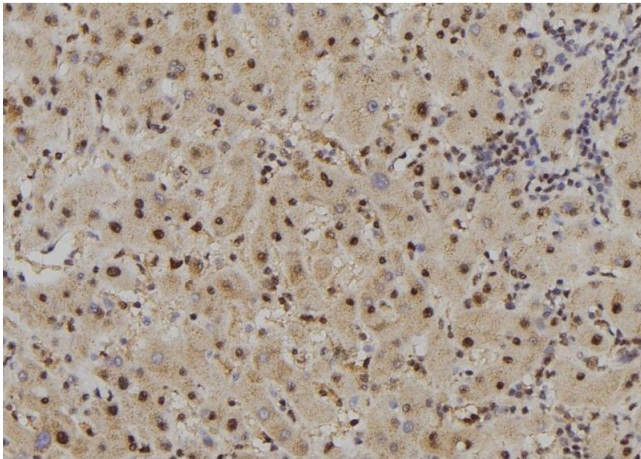
Preservative: Sodium azide

Precaution of Use: This product contains Sodium azide: a POISONOUS AND HAZARDOUS SUBSTANCE which should be handled by trained staff only.

Storage: -20 °C

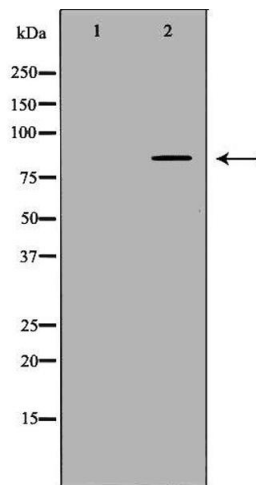
Storage Comment: Store at -20 °C. Stable for 12 months from date of receipt.

Expiry Date: 12 months



Immunohistochemistry

Image 1. ABIN6277489 at 1/100 staining Human liver tissue by IHC-P. The sample was formaldehyde fixed and a heat mediated antigen retrieval step in citrate buffer was performed. The sample was then blocked and incubated with the antibody for 1.5 hours at 22°C. An HRP conjugated goat anti-rabbit antibody was used as the secondary



Western Blotting

Image 2. Western blot analysis of extracts of recombinant protein, using FAM160B2 antibody. The lane on the left is treated with the antigen-specific peptide.