

Datasheet for ABIN6261694

**anti-FBXO22 antibody (Internal Region)****3** Images[Go to Product page](#)

## Overview

Quantity:	100 µL
Target:	FBXO22
Binding Specificity:	Internal Region
Reactivity:	Human
Host:	Rabbit
Clonality:	Polyclonal
Conjugate:	This FBXO22 antibody is un-conjugated
Application:	Western Blotting (WB), Immunohistochemistry (IHC), Immunocytochemistry (ICC), Immunofluorescence (IF)

## Product Details

Immunogen:	A synthesized peptide derived from human FBXO22, corresponding to a region within the internal amino acids.
Isotype:	IgG
Specificity:	FBXO22 Antibody detects endogenous levels of total FBXO22.
Predicted Reactivity:	Bovine, Sheep, Rabbit, Dog, Chicken
Purification:	The antiserum was purified by peptide affinity chromatography using SulfoLink™ Coupling Resin (Thermo Fisher Scientific).

## Target Details

Target:	FBXO22
---------	--------

## Target Details

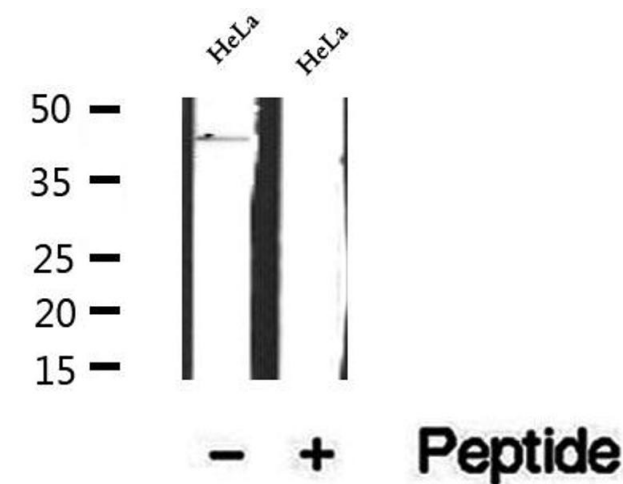
Alternative Name:	FBXO22 ( <a href="#">FBXO22 Products</a> )
Background:	<p>Description: Substrate-recognition component of the SCF (SKP1-CUL1-F-box protein)-type E3 ubiquitin ligase complex. Promotes the proteasome-dependent degradation of key sarcomeric proteins, such as alpha-actinin (ACTN2) and filamin-C (FLNC), essential for maintenance of normal contractile function.</p> <p>Gene: FBXO22</p>
Molecular Weight:	45 kDa
Gene ID:	26263
UniProt:	<a href="#">Q8NEZ5</a>
Pathways:	<a href="#">Regulation of Muscle Cell Differentiation, Skeletal Muscle Fiber Development</a>

## Application Details

Application Notes:	WB 1:500-1:2000, IHC 1:50-1:200, IF/ICC 1:100-1:500
Restrictions:	For Research Use only

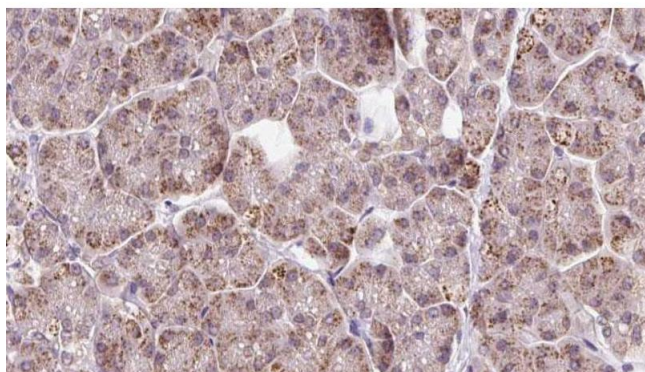
## Handling

Format:	Liquid
Concentration:	1 mg/mL
Buffer:	Rabbit IgG in phosphate buffered saline , pH 7.4, 150 mM NaCl, 0.02 % sodium azide and 50 % glycerol.
Preservative:	Sodium azide
Precaution of Use:	This product contains Sodium azide: a POISONOUS AND HAZARDOUS SUBSTANCE which should be handled by trained staff only.
Storage:	-20 °C
Storage Comment:	Store at -20 °C. Stable for 12 months from date of receipt.
Expiry Date:	12 months



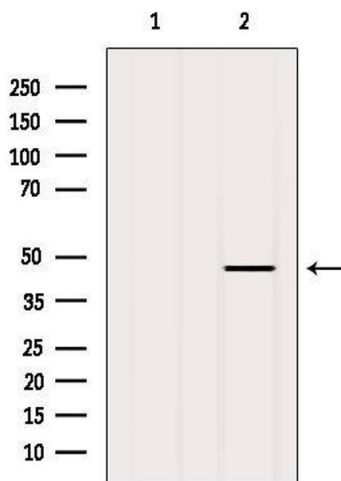
Western Blotting

**Image 1.** Western blot analysis of extracts of HeLa cells, using FBXO22 antibody.



Immunohistochemistry

**Image 2.** ABIN6273243 at 1/100 staining Human pancreas cancer tissue by IHC-P. The sample was formaldehyde fixed and a heat mediated antigen retrieval step in citrate buffer was performed. The sample was then blocked and incubated with the antibody for 1.5 hours at 22°C. An HRP conjugated goat anti-rabbit antibody was used as the secondary.



Western Blotting

**Image 3.** Western blot analysis of extracts from MCF7, using FBXO22 Antibody. The lane on the left was treated with blocking peptide.