

Datasheet for ABIN6261762  
**anti-FKSG2 antibody**

2 Images



[Go to Product page](#)

## Overview

Quantity:	100 µL
Target:	FKSG2
Reactivity:	Human, Mouse
Host:	Rabbit
Clonality:	Polyclonal
Conjugate:	This FKSG2 antibody is un-conjugated
Application:	ELISA, Western Blotting (WB), Immunohistochemistry (IHC)

## Product Details

Immunogen:	A synthesized peptide derived from human FKSG2
Isotype:	IgG
Specificity:	FKSG2 Antibody detects endogenous levels of total FKSG2
Cross-Reactivity:	Human, Mouse (Murine)
Purification:	The antiserum was purified by peptide affinity chromatography using SulfoLink™ Coupling Resin (Thermo Fisher Scientific).

## Target Details

Target:	FKSG2
Alternative Name:	FKSG2 ( <a href="#">FKSG2 Products</a> )
Background:	Description: Could be the product of a pseudogene.

## Target Details

Gene: TPT1P8

Molecular Weight: 16 kDa

UniProt: [Q9HAU6](#)

## Application Details

Application Notes: WB 1:1000-3000 IHC 1:200

Restrictions: For Research Use only

## Handling

Format: Liquid

Concentration: 1 mg/mL

Buffer: Rabbit IgG in phosphate buffered saline , pH 7.4, 150 mM NaCl, 0.02 % sodium azide and 50 % glycerol.

Preservative: Sodium azide

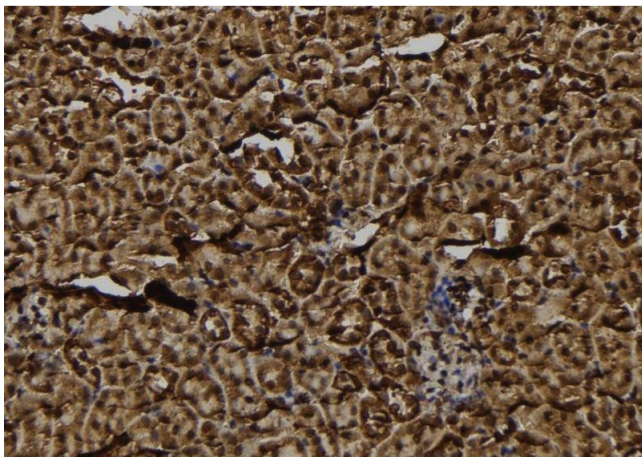
Precaution of Use: This product contains Sodium azide: a POISONOUS AND HAZARDOUS SUBSTANCE which should be handled by trained staff only.

Storage: -20 °C

Storage Comment: Store at -20 °C.Stable for 12 months from date of receipt

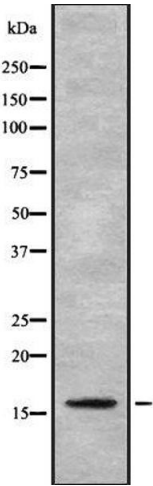
Expiry Date: 12 months

## Images



### Immunohistochemistry

**Image 1.** ABIN6278865 at 1/100 staining Mouse kidney tissue by IHC-P. The sample was formaldehyde fixed and a heat mediated antigen retrieval step in citrate buffer was performed. The sample was then blocked and incubated with the antibody for 1.5 hours at 22°C. An HRP conjugated goat anti-rabbit antibody was used as the secondary



Western Blotting

**Image 2.** Western blot analysis FKSG2 using HT29 whole cell lysates