



[Go to Product page](#)

Datasheet for ABIN6261775  
**anti-FMR1NB antibody (C-Term)**

3 Images

Overview

Quantity:	100 µL
Target:	FMR1NB
Binding Specificity:	C-Term
Reactivity:	Human, Mouse
Host:	Rabbit
Clonality:	Polyclonal
Conjugate:	This FMR1NB antibody is un-conjugated
Application:	Western Blotting (WB), ELISA, Immunohistochemistry (IHC)

Product Details

Immunogen:	A synthesized peptide derived from human FMR1NB, corresponding to a region within C-terminal amino acids.
Isotype:	IgG
Specificity:	FMR1NB Antibody detects endogenous levels of total FMR1NB.
Purification:	The antiserum was purified by peptide affinity chromatography using SulfoLink™ Coupling Resin (Thermo Fisher Scientific).

Target Details

Target:	FMR1NB
Alternative Name:	FMR1NB ( <a href="#">FMR1NB Products</a> )

## Target Details

---

Background: Gene: FMR1NB

Molecular Weight: 29kDa

Gene ID: 158521

UniProt: [Q8N0W7](#)

## Application Details

---

Application Notes: WB 1:1000-3000, IHC 1:200, ELISA(peptide) 1:20000-1:40000

Restrictions: For Research Use only

## Handling

---

Format: Liquid

Concentration: 1 mg/mL

Buffer: Rabbit IgG in phosphate buffered saline , pH 7.4, 150 mM NaCl, 0.02 % sodium azide and 50 % glycerol.

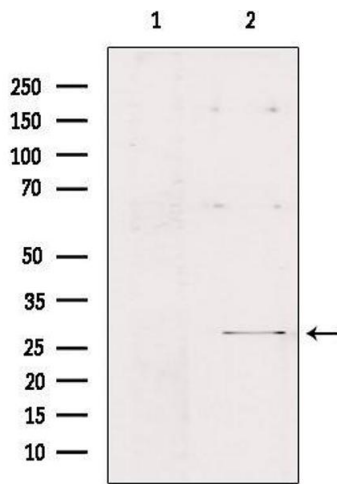
Preservative: Sodium azide

Precaution of Use: This product contains Sodium azide: a POISONOUS AND HAZARDOUS SUBSTANCE which should be handled by trained staff only.

Storage: -20 °C

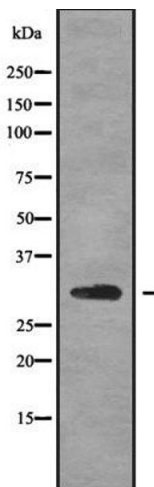
Storage Comment: Store at -20 °C. Stable for 12 months from date of receipt.

Expiry Date: 12 months



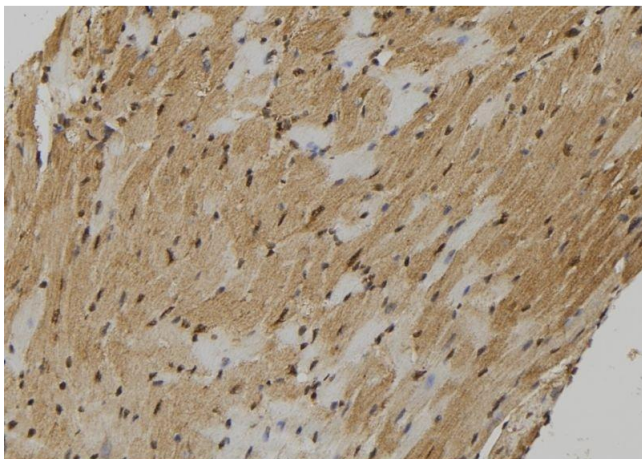
### Western Blotting

**Image 1.** Western blot analysis of extracts from Hepg2, using FMR1NB Antibody. Lane 1 was treated with the blocking peptide.



### Western Blotting

**Image 2.** Western blot analysis FMR1NB using HuvEc whole cell lysates



### Immunohistochemistry

**Image 3.** ABIN6278998 at 1/100 staining Mouse heart tissue by IHC-P. The sample was formaldehyde fixed and a heat mediated antigen retrieval step in citrate buffer was performed. The sample was then blocked and incubated with the antibody for 1.5 hours at 22°C. An HRP conjugated goat anti-rabbit antibody was used as the secondary