

Datasheet for ABIN6261793

anti-FOXL1 antibody**2** Images[Go to Product page](#)

Overview

Quantity:	100 µL
Target:	FOXL1
Reactivity:	Human, Monkey
Host:	Rabbit
Clonality:	Polyclonal
Conjugate:	This FOXL1 antibody is un-conjugated
Application:	Western Blotting (WB), ELISA, Immunofluorescence (IF), Immunocytochemistry (ICC)

Product Details

Immunogen:	A synthesized peptide derived from human FOXL1
Isotype:	IgG
Specificity:	FOXL1 Antibody detects endogenous levels of FOXL1
Cross-Reactivity:	Human, Monkey
Purification:	The antiserum was purified by peptide affinity chromatography using SulfoLink™ Coupling Resin (Thermo Fisher Scientific).

Target Details

Target:	FOXL1
Alternative Name:	FOXL1 (FOXL1 Products)
Background:	Description: Transcription factor required for proper proliferation and differentiation in the

Target Details

gastrointestinal epithelium. Target gene of the hedgehog (Hh) signaling pathway via GLI2 AND GLI3 transcription factors (By similarity).

Gene: FOXL1

Molecular Weight: 36kDa

Gene ID: 2300

UniProt: [Q12952](#)

Application Details

Application Notes: WB 1:500-1:2000, IF/ICC 1:100-1:500

Restrictions: For Research Use only

Handling

Format: Liquid

Concentration: 1 mg/mL

Buffer: Rabbit IgG in phosphate buffered saline , pH 7.4, 150 mM NaCl, 0.02 % sodium azide and 50 % glycerol.

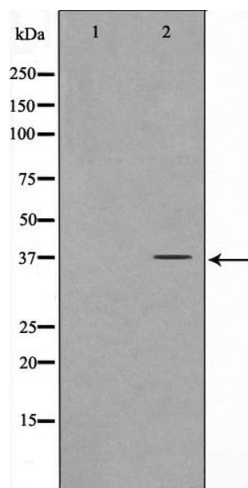
Preservative: Sodium azide

Precaution of Use: This product contains Sodium azide: a POISONOUS AND HAZARDOUS SUBSTANCE which should be handled by trained staff only.

Storage: -20 °C

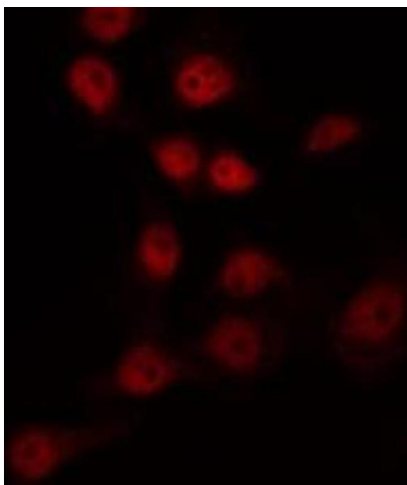
Storage Comment: Store at -20 °C.Stable for 12 months from date of receipt

Expiry Date: 12 months



Western Blotting

Image 1. Western blot analysis on COS7 cell lysate using FOXL1 Antibody, *The lane on the left is treated with the antigen-specific peptide.*



Immunofluorescence (fixed cells)

Image 2. ABIN6266966 staining COS7 by IF/ICC. The sample were fixed with PFA and permeabilized in 0.1% Triton X-100, then blocked in 10% serum for 45 minutes at 25°C. The primary antibody was diluted at 1/200 and incubated with the sample for 1 hour at 37°C. An Alexa Fluor 594 conjugated goat anti-rabbit IgG (H+L) Ab, diluted at 1/600, was used as the secondary antibody.