



[Go to Product page](#)

Datasheet for ABIN6261859  
**anti-GABRB2 antibody (N-Term)**

2 Images

Overview

Quantity:	100 µL
Target:	GABRB2
Binding Specificity:	N-Term
Reactivity:	Human, Rat, Mouse
Host:	Rabbit
Clonality:	Polyclonal
Conjugate:	This GABRB2 antibody is un-conjugated
Application:	Western Blotting (WB), ELISA, Immunohistochemistry (IHC)

Product Details

Immunogen:	A synthesized peptide derived from human GABRB2, corresponding to a region within N-terminal amino acids.
Isotype:	IgG
Specificity:	GABRB2 Antibody detects endogenous levels of total GABRB2.
Predicted Reactivity:	Pig,Bovine,Horse,Rabbit,Dog,Chicken
Purification:	The antiserum was purified by peptide affinity chromatography using SulfoLink™ Coupling Resin (Thermo Fisher Scientific).

Target Details

Target:	GABRB2
---------	--------

## Target Details

---

Alternative Name:	GABRB2 ( <a href="#">GABRB2 Products</a> )
Background:	<p>Description: Component of the heteropentameric receptor for GABA, the major inhibitory neurotransmitter in the vertebrate brain. Functions also as histamine receptor and mediates cellular responses to histamine. Functions as receptor for diazepines and various anesthetics, such as pentobarbital, these are bound at a separate allosteric effector binding site. Functions as ligand-gated chloride channel.</p> <p>Gene: GABRB2</p>
Molecular Weight:	59kDa
Gene ID:	2561
UniProt:	<a href="#">P47870</a>
Pathways:	<a href="#">Sensory Perception of Sound</a> , <a href="#">Synaptic Membrane</a>

## Application Details

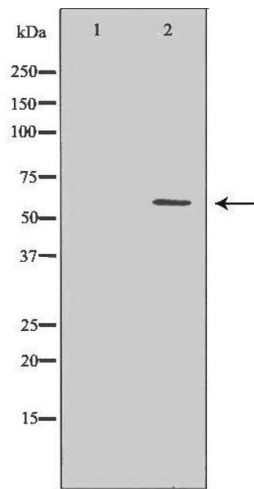
---

Application Notes:	WB 1:500-1:2000, IHC 1:50-1:200, ELISA(peptide) 1:20000-1:40000
Restrictions:	For Research Use only

## Handling

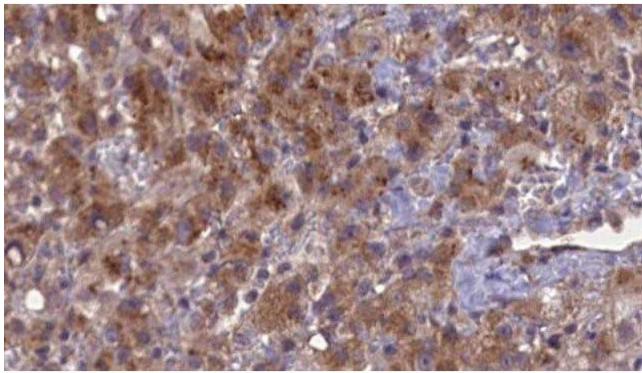
---

Format:	Liquid
Concentration:	1 mg/mL
Buffer:	Rabbit IgG in phosphate buffered saline , pH 7.4, 150 mM NaCl, 0.02 % sodium azide and 50 % glycerol.
Preservative:	Sodium azide
Precaution of Use:	This product contains Sodium azide: a POISONOUS AND HAZARDOUS SUBSTANCE which should be handled by trained staff only.
Storage:	-20 °C
Storage Comment:	Store at -20 °C. Stable for 12 months from date of receipt.
Expiry Date:	12 months



### Western Blotting

**Image 1.** Western blot analysis of extracts of mouse liver, using GABRB2 antibody. The lane on the left is treated with the antigen-specific peptide.



### Immunohistochemistry

**Image 2.** ABIN6276934 at 1/100 staining Human liver cancer tissue by IHC-P. The sample was formaldehyde fixed and a heat mediated antigen retrieval step in citrate buffer was performed. The sample was then blocked and incubated with the antibody for 1.5 hours at 22°C. An HRP conjugated goat anti-rabbit antibody was used as the secondary