



[Go to Product page](#)

Datasheet for ABIN626189
anti-UBE2D2 antibody (AA 1-95)

2 Images

Overview

Quantity:	50 µg
Target:	UBE2D2
Binding Specificity:	AA 1-95
Reactivity:	Human, Mouse, Rat
Host:	Mouse
Clonality:	Monoclonal
Application:	Western Blotting (WB), ELISA, Immunohistochemistry (IHC), Immunohistochemistry (Paraffin-embedded Sections) (IHC (p))

Product Details

Brand:	IHC-plus™
Immunogen:	UBE2D2 (NP_003330, 1 a.a. ~ 95 a.a) partial recombinant protein with GST tag. MW of the GST tag alone is 26 KDa. Type of Immunogen: Recombinant protein
Clone:	4A1
Isotype:	IgG2a kappa
Specificity:	Human UBE2D2
Purification:	Purified from ascites by Protein A

Target Details

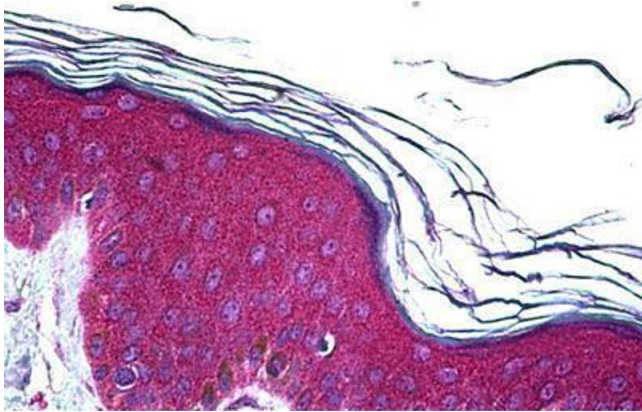
Target:	UBE2D2
Alternative Name:	UBE2D2 / UBCH5B (UBE2D2 Products)
Background:	Name/Gene ID: UBE2D2 Synonyms: UBE2D2, E2(17)KB2, PUBC1, UBCH4, UBCH5B, UBC4/5, UBC5B, Ubiquitin carrier protein D2, UBC4, Ubiquitin-protein ligase D2
Gene ID:	7322
NCBI Accession:	NP_003330
UniProt:	P62837
Pathways:	Activation of Innate immune Response , Toll-Like Receptors Cascades

Application Details

Application Notes:	Approved: ELISA, IHC, IHC-P (5 µg/mL), WB Usage: Immunohistochemistry: Formalin-fixed paraffin-embedded sections. Sandwich ELISA: Recombinant protein. Western Blot using cell line lysates and the recombinant protein used as the immunogen.
Comment:	Target Species of Antibody: Human
Restrictions:	For Research Use only

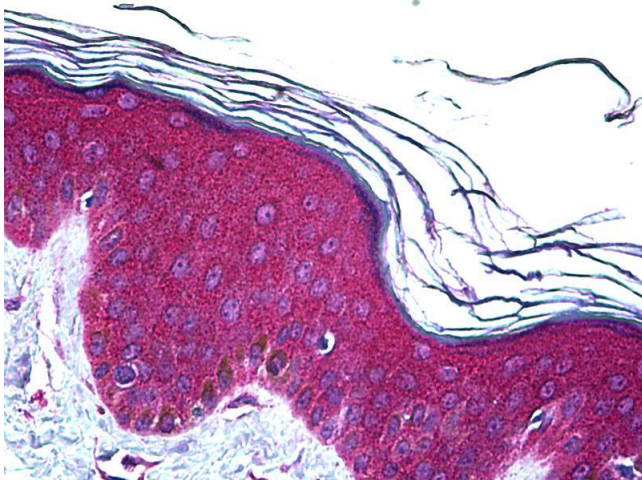
Handling

Format:	Liquid
Concentration:	Lot specific
Buffer:	PBS, pH 7.4.
Handling Advice:	avoid freeze thaw cycles.
Storage:	4 °C, -20 °C
Storage Comment:	Short term 4°C, long term aliquot and store at -20°C, avoid freeze-thaw cycles.



Immunohistochemistry (Formalin-fixed Paraffin-embedded Sections)

Image 1. Human Skin: Formalin-Fixed, Paraffin-Embedded (FFPE)



Immunohistochemistry

Image 2. Anti-UBE2D2 antibody IHC of human skin. Immunohistochemistry of formalin-fixed, paraffin-embedded tissue after heat-induced antigen retrieval. Antibody concentration 5 ug/ml.