

Datasheet for ABIN6261900

anti-GATA2 antibody**3** Images[Go to Product page](#)

Overview

| | |
|--------------|--|
| Quantity: | 100 µL |
| Target: | GATA2 |
| Reactivity: | Human, Mouse, Rat |
| Host: | Rabbit |
| Clonality: | Polyclonal |
| Conjugate: | This GATA2 antibody is un-conjugated |
| Application: | Western Blotting (WB), ELISA, Immunohistochemistry (IHC), Immunofluorescence (IF), Immunocytochemistry (ICC) |

Product Details

| | |
|-------------------|---|
| Immunogen: | A synthesized peptide derived from human GATA2/3 |
| Isotype: | IgG |
| Specificity: | GATA2/3 Antibody detects endogenous levels of total GATA2/3 |
| Cross-Reactivity: | Human, Mouse (Murine), Rat (Rattus) |
| Purification: | The antiserum was purified by peptide affinity chromatography using SulfoLink™ Coupling Resin (Thermo Fisher Scientific). |

Target Details

| | |
|-------------------|--|
| Target: | GATA2 |
| Alternative Name: | GATA2/3 (GATA2 Products) |

Target Details

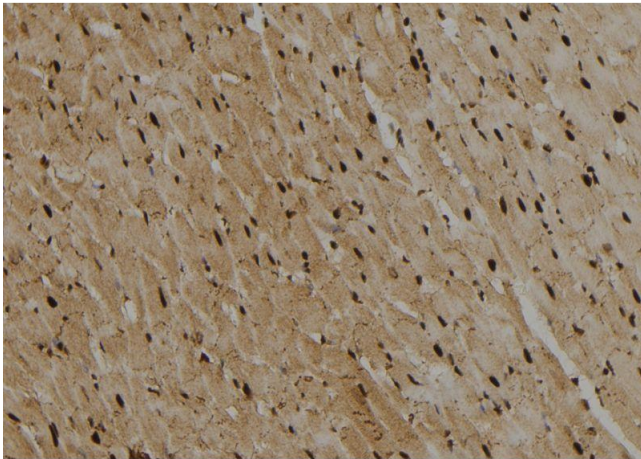
| | |
|-------------------|--|
| Background: | Description: Transcriptional activator which regulates endothelin-1 gene expression in endothelial cells. Binds to the consensus sequence 5'-AGATAG-3'. Gene: GATA2 |
| Molecular Weight: | 51kDa |
| Gene ID: | 2624 |
| UniProt: | P23769 , P23771 |
| Pathways: | Stem Cell Maintenance |

Application Details

| | |
|--------------------|---------------------------------|
| Application Notes: | WB 1:1000-3000 IHC 1:200 ICC/IF |
| Restrictions: | For Research Use only |

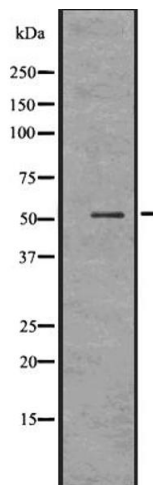
Handling

| | |
|--------------------|--|
| Format: | Liquid |
| Concentration: | 1 mg/mL |
| Buffer: | Rabbit IgG in phosphate buffered saline , pH 7.4, 150 mM NaCl, 0.02 % sodium azide and 50 % glycerol. |
| Preservative: | Sodium azide |
| Precaution of Use: | This product contains Sodium azide: a POISONOUS AND HAZARDOUS SUBSTANCE which should be handled by trained staff only. |
| Storage: | -20 °C |
| Storage Comment: | Store at -20 °C.Stable for 12 months from date of receipt |
| Expiry Date: | 12 months |



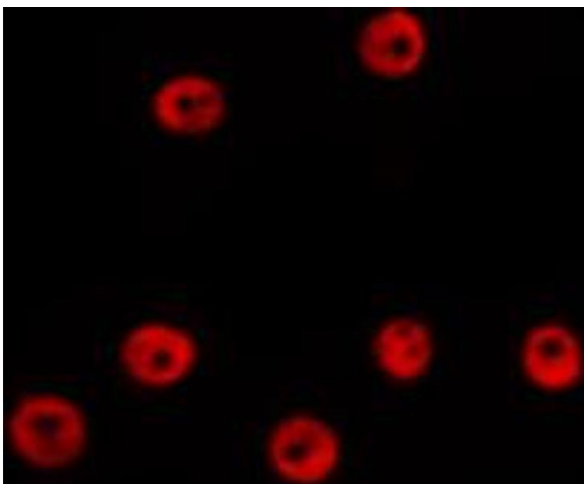
Immunohistochemistry

Image 1. ABIN6274012 at 1/100 staining Rat heart tissue by IHC-P. The sample was formaldehyde fixed and a heat mediated antigen retrieval step in citrate buffer was performed. The sample was then blocked and incubated with the antibody for 1.5 hours at 22°C. An HRP conjugated goat anti-rabbit antibody was used as the secondary.



Western Blotting

Image 2. Western blot analysis GATA2/3 using HeLa whole cell lysates



Immunofluorescence (fixed cells)

Image 3. ABIN6274012 staining HepG2 by IF/ICC. The sample were fixed with PFA and permeabilized in 0.1% Triton X-100, then blocked in 10% serum for 45 minutes at 25°C. The primary antibody was diluted at 1/200 and incubated with the sample for 1 hour at 37°C. An Alexa Fluor 594 conjugated goat anti-rabbit IgG (H+L) Ab, diluted at 1/600, was used as the secondary antibody.