

Datasheet for ABIN6261915
anti-GCLM antibody (N-Term)[Go to Product page](#)

2 Images

2 Publications

Overview

Quantity:	100 µL
Target:	GCLM
Binding Specificity:	N-Term
Reactivity:	Human, Mouse, Rat, Pig
Host:	Rabbit
Clonality:	Polyclonal
Conjugate:	This GCLM antibody is un-conjugated
Application:	Western Blotting (WB), Immunohistochemistry (IHC), ELISA

Product Details

Immunogen:	A synthesized peptide derived from human GCLM, corresponding to a region within N-terminal amino acids.
Isotype:	IgG
Specificity:	GCLM Antibody detects endogenous levels of total GCLM.
Predicted Reactivity:	Pig,Bovine,Rabbit
Purification:	The antiserum was purified by peptide affinity chromatography using SulfoLink™ Coupling Resin (Thermo Fisher Scientific).

Target Details

Target:	GCLM
---------	------

Target Details

Alternative Name:	GCLM (GCLM Products)
Background:	Gene: GCLM
Molecular Weight:	30kDa
Gene ID:	2730
UniProt:	P48507

Application Details

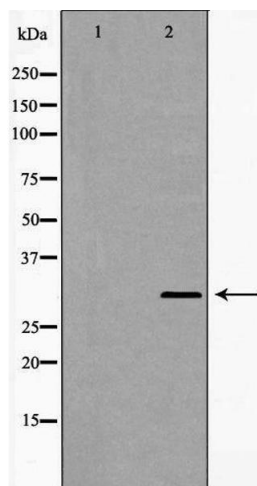
Application Notes:	WB 1:500-1:2000, IHC 1:50-1:200, ELISA(peptide) 1:20000-1:40000
Restrictions:	For Research Use only

Handling

Format:	Liquid
Concentration:	1 mg/mL
Buffer:	Rabbit IgG in phosphate buffered saline , pH 7.4, 150 mM NaCl, 0.02 % sodium azide and 50 % glycerol.
Preservative:	Sodium azide
Precaution of Use:	This product contains Sodium azide: a POISONOUS AND HAZARDOUS SUBSTANCE which should be handled by trained staff only.
Storage:	-20 °C
Storage Comment:	Store at -20 °C. Stable for 12 months from date of receipt.
Expiry Date:	12 months

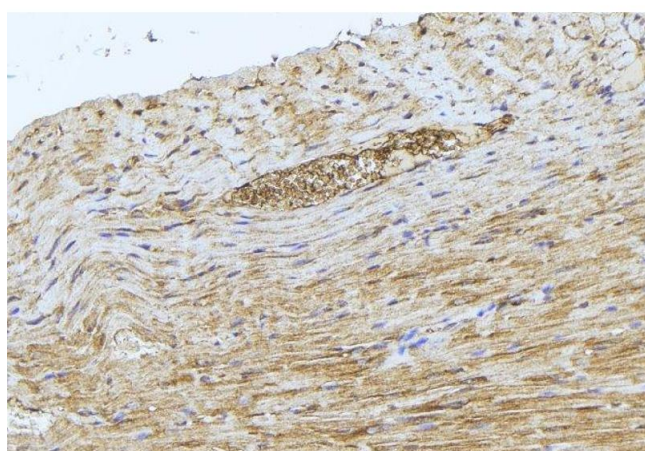
Publications

Product cited in:	Qiu, Ma, Wu, Ding: "DL-3-n-butylphthalide improves ventricular function, and prevents ventricular remodeling and arrhythmias in post-MI rats." in: Naunyn-Schmiedeberg's archives of pharmacology , Vol. 391, Issue 6, pp. 627-637, (2018) (PubMed).
-------------------	---



Western Blotting

Image 1. Western blot analysis of MCF7 cell lysate, using GCLM Antibody. The lane on the left is treated with the antigen-specific peptide.



Immunohistochemistry

Image 2. ABIN6277512 at 1/100 staining Mouse muscle tissue by IHC-P. The sample was formaldehyde fixed and a heat mediated antigen retrieval step in citrate buffer was performed. The sample was then blocked and incubated with the antibody for 1.5 hours at 22°C. An HRP conjugated goat anti-rabbit antibody was used as the secondary