

Datasheet for ABIN6261918  
**anti-GUCY1B2 antibody**

## 2 Images

[Go to Product page](#)

## Overview

Quantity:	100 µL
Target:	GUCY1B2
Reactivity:	Human, Mouse, Rat
Host:	Rabbit
Clonality:	Polyclonal
Conjugate:	This GUCY1B2 antibody is un-conjugated
Application:	Immunohistochemistry (IHC), ELISA, Western Blotting (WB)

## Product Details

Immunogen:	A synthesized peptide derived from human GCS-beta-2
Isotype:	IgG
Specificity:	GCS-β-2 Antibody detects endogenous levels of total GCS-β-2
Cross-Reactivity:	Human, Mouse (Murine), Rat (Rattus)
Purification:	The antiserum was purified by peptide affinity chromatography using SulfoLink™ Coupling Resin (Thermo Fisher Scientific).

## Target Details

Target:	GUCY1B2
Alternative Name:	GCS-beta-2 ( <a href="#">GUCY1B2 Products</a> )
Background:	Description: There are two types of guanylate cyclases: soluble forms and membrane-

## Target Details

associated receptor forms.

Gene: GUCY1B2

Molecular Weight: 70 kDa

UniProt: [O75343](#)

## Application Details

Application Notes: WB 1:1000-3000 IHC 1:200

Restrictions: For Research Use only

## Handling

Format: Liquid

Concentration: 1 mg/mL

Buffer: Rabbit IgG in phosphate buffered saline , pH 7.4, 150 mM NaCl, 0.02 % sodium azide and 50 % glycerol.

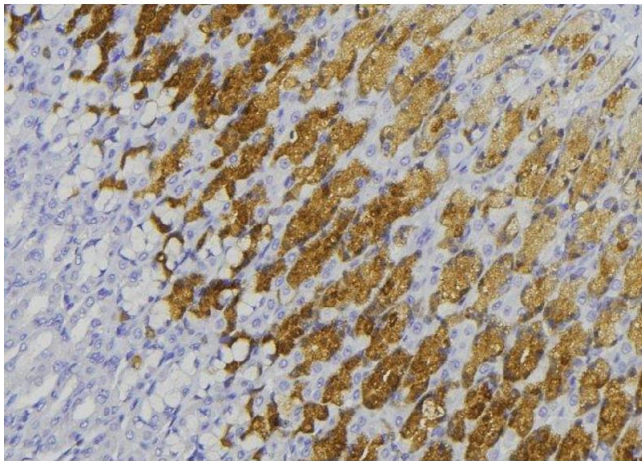
Preservative: Sodium azide

Precaution of Use: This product contains Sodium azide: a POISONOUS AND HAZARDOUS SUBSTANCE which should be handled by trained staff only.

Storage: -20 °C

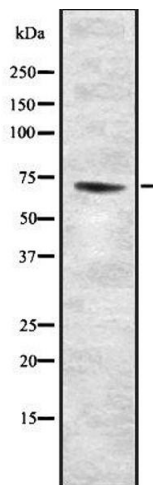
Storage Comment: Store at -20 °C.Stable for 12 months from date of receipt

Expiry Date: 12 months



### Immunohistochemistry

**Image 1.** ABIN6278469 at 1/100 staining Human gastric tissue by IHC-P. The sample was formaldehyde fixed and a heat mediated antigen retrieval step in citrate buffer was performed. The sample was then blocked and incubated with the antibody for 1.5 hours at 22°C. An HRP conjugated goat anti-rabbit antibody was used as the secondary



### Western Blotting

**Image 2.** Western blot analysis GCS-β-2 using COLO205 whole cell lysates