



[Go to Product page](#)

Datasheet for ABIN6261928

anti-GDF3 antibody (Internal Region)

1 Image

Overview

Quantity:	100 µL
Target:	GDF3
Binding Specificity:	Internal Region
Reactivity:	Human, Mouse, Rat
Host:	Rabbit
Clonality:	Polyclonal
Conjugate:	This GDF3 antibody is un-conjugated
Application:	Western Blotting (WB), Immunohistochemistry (IHC), ELISA, Immunocytochemistry (ICC), Immunofluorescence (IF)

Product Details

Immunogen:	A synthesized peptide derived from human GDF3, corresponding to a region within the internal amino acids.
Isotype:	IgG
Specificity:	GDF3 Antibody detects endogenous levels of total GDF3.
Predicted Reactivity:	Dog
Purification:	The antiserum was purified by peptide affinity chromatography using SulfoLink™ Coupling Resin (Thermo Fisher Scientific).

Target Details

Target:	GDF3
---------	------

Target Details

Alternative Name: [GDF3 \(GDF3 Products\)](#)

Background: Description: Growth factor involved in early embryonic development and adipose-tissue homeostasis. During embryogenesis controls formation of anterior visceral endoderm and mesoderm and the establishment of anterior-posterior identity through a receptor complex comprising the receptor ACVR1B and the coreceptor TDGF1/Cripto (By similarity). Regulates adipose-tissue homeostasis and energy balance under nutrient overload in part by signaling through the receptor complex based on ACVR1C and TDGF1/Cripto (PubMed:21805089).
Gene: GDF3

Molecular Weight: 41 kDa

Gene ID: 9573

UniProt: [Q9NR23](#)

Application Details

Application Notes: WB 1:1000-3000, IF/ICC 1:100-1:500, IHC 1:50-1:200, ELISA(peptide) 1:20000-1:40000

Restrictions: For Research Use only

Handling

Format: Liquid

Concentration: 1 mg/mL

Buffer: Rabbit IgG in phosphate buffered saline , pH 7.4, 150 mM NaCl, 0.02 % sodium azide and 50 % glycerol.

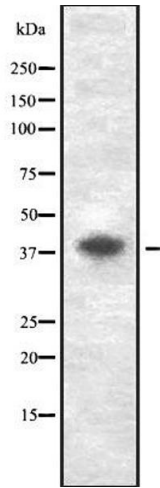
Preservative: Sodium azide

Precaution of Use: This product contains Sodium azide: a POISONOUS AND HAZARDOUS SUBSTANCE which should be handled by trained staff only.

Storage: -20 °C

Storage Comment: Store at -20 °C. Stable for 12 months from date of receipt.

Expiry Date: 12 months



Western Blotting

Image 1. Western blot analysis GDF3 using Jurkat whole cell lysates