

Datasheet for ABIN6261936

**anti-ARHGEF25/GEFT antibody (Internal Region)**[Go to Product page](#)**2** Images

## Overview

Quantity:	100 µL
Target:	ARHGEF25/GEFT (ARHGEF25)
Binding Specificity:	Internal Region
Reactivity:	Rat, Human, Mouse
Host:	Rabbit
Clonality:	Polyclonal
Conjugate:	This ARHGEF25/GEFT antibody is un-conjugated
Application:	Western Blotting (WB), Immunohistochemistry (IHC)

## Product Details

Immunogen:	A synthesized peptide derived from human GEFT, corresponding to a region within the internal amino acids.
Isotype:	IgG
Specificity:	GEFT Antibody detects endogenous levels of total GEFT.
Predicted Reactivity:	Pig,Bovine,Horse,Sheep,Rabbit,Dog,Xenopus
Purification:	The antiserum was purified by peptide affinity chromatography using SulfoLink™ Coupling Resin (Thermo Fisher Scientific).

## Target Details

Target:	ARHGEF25/GEFT (ARHGEF25)
---------	--------------------------

## Target Details

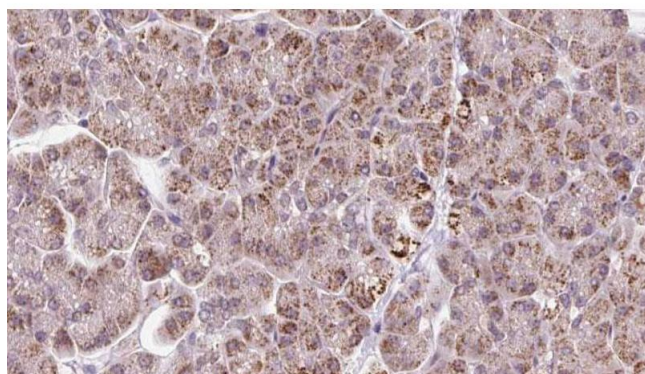
Alternative Name:	ARHGEF25 ( <a href="#">ARHGEF25 Products</a> )
Background:	<p>Description: May play a role in actin cytoskeleton reorganization in different tissues since its activation induces formation of actin stress fibers. It works as a guanine nucleotide exchange factor for Rho family of small GTPases. Links specifically G alpha q/11-coupled receptors to RHOA activation. May be an important regulator of processes involved in axon and dendrite formation. In neurons seems to be an exchange factor primarily for RAC1. Involved in skeletal myogenesis (By similarity).</p> <p>Gene: ARHGEF25</p>
Molecular Weight:	64 kDa
Gene ID:	115557
UniProt:	<a href="#">Q86VW2</a>

## Application Details

Application Notes:	WB 1:500-1:2000, IHC 1:50-1:200
Restrictions:	For Research Use only

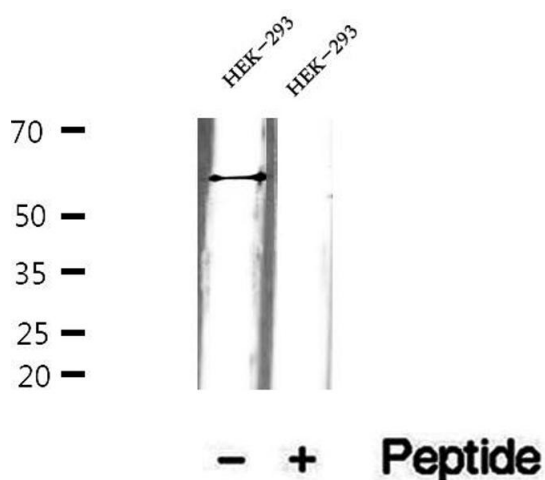
## Handling

Format:	Liquid
Concentration:	1 mg/mL
Buffer:	Rabbit IgG in phosphate buffered saline , pH 7.4, 150 mM NaCl, 0.02 % sodium azide and 50 % glycerol.
Preservative:	Sodium azide
Precaution of Use:	This product contains Sodium azide: a POISONOUS AND HAZARDOUS SUBSTANCE which should be handled by trained staff only.
Storage:	-20 °C
Storage Comment:	Store at -20 °C. Stable for 12 months from date of receipt.
Expiry Date:	12 months



### Immunohistochemistry

**Image 1.** ABIN6273247 at 1/100 staining Human pancreas cancer tissue by IHC-P. The sample was formaldehyde fixed and a heat mediated antigen retrieval step in citrate buffer was performed. The sample was then blocked and incubated with the antibody for 1.5 hours at 22°C. An HRP conjugated goat anti-rabbit antibody was used as the secondary.



### Western Blotting

**Image 2.** Western blot analysis of extracts of HEK-293 cells, using GEFT antibody.