

Datasheet for ABIN6261948

**anti-Growth Hormone 1 antibody (N-Term)**[Go to Product page](#)**1** Image

## Overview

Quantity:	100 µL
Target:	Growth Hormone 1 (GH1)
Binding Specificity:	N-Term
Reactivity:	Human
Host:	Rabbit
Clonality:	Polyclonal
Conjugate:	This Growth Hormone 1 antibody is un-conjugated
Application:	Western Blotting (WB), ELISA

## Product Details

Immunogen:	A synthesized peptide derived from human GH1, corresponding to a region within N-terminal amino acids.
Isotype:	IgG
Specificity:	GH1 Antibody detects endogenous levels of total GH1.
Purification:	The antiserum was purified by peptide affinity chromatography using SulfoLink™ Coupling Resin (Thermo Fisher Scientific).

## Target Details

Target:	Growth Hormone 1 (GH1)
Alternative Name:	GH1 ( <a href="#">GH1 Products</a> )

## Target Details

Background:	<p>Description: Plays an important role in growth control. Its major role in stimulating body growth is to stimulate the liver and other tissues to secrete IGF-1. It stimulates both the differentiation and proliferation of myoblasts. It also stimulates amino acid uptake and protein synthesis in muscle and other tissues.</p> <p>Gene: GH1</p>
-------------	--

Molecular Weight:	25 kDa
-------------------	--------

Gene ID:	2688
----------	------

UniProt:	<a href="#">P01241</a>
----------	------------------------

Pathways:	<a href="#">NF-kappaB Signaling</a> , <a href="#">JAK-STAT Signaling</a> , <a href="#">Intracellular Steroid Hormone Receptor Signaling Pathway</a> , <a href="#">Peptide Hormone Metabolism</a> , <a href="#">Regulation of Intracellular Steroid Hormone Receptor Signaling</a> , <a href="#">Regulation of Hormone Metabolic Process</a> , <a href="#">Response to Growth Hormone Stimulus</a> , <a href="#">Regulation of Hormone Biosynthetic Process</a>
-----------	--

## Application Details

Application Notes:	WB 1:1000-3000, ELISA(peptide) 1:20000-1:40000
--------------------	--

Restrictions:	For Research Use only
---------------	-----------------------

## Handling

Format:	Liquid
---------	--------

Concentration:	1 mg/mL
----------------	---------

Buffer:	Rabbit IgG in phosphate buffered saline , pH 7.4, 150 mM NaCl, 0.02 % sodium azide and 50 % glycerol.
---------	---

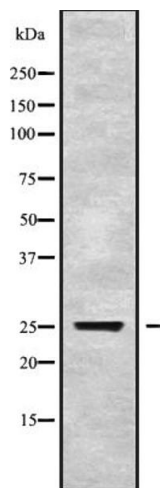
Preservative:	Sodium azide
---------------	--------------

Precaution of Use:	This product contains Sodium azide: a POISONOUS AND HAZARDOUS SUBSTANCE which should be handled by trained staff only.
--------------------	--

Storage:	-20 °C
----------	--------

Storage Comment:	Store at -20 °C. Stable for 12 months from date of receipt.
------------------	---

Expiry Date:	12 months
--------------	-----------



Western Blotting

**Image 1.** Western blot analysis GH1 using COLO205 whole cell lysates