



[Go to Product page](#)

Datasheet for ABIN6261950
anti-Ghrelin antibody (C-Term)

2 Images

Overview

Quantity:	100 µL
Target:	Ghrelin (GHRL)
Binding Specificity:	C-Term
Reactivity:	Human, Rat, Mouse
Host:	Rabbit
Clonality:	Polyclonal
Conjugate:	This Ghrelin antibody is un-conjugated
Application:	Western Blotting (WB), ELISA, Immunohistochemistry (IHC)

Product Details

Immunogen:	A synthesized peptide derived from human GHRL, corresponding to a region within C-terminal amino acids.
Isotype:	IgG
Specificity:	GHRL Antibody detects endogenous levels of total GHRL.
Predicted Reactivity:	Pig,Bovine,Horse,Sheep
Purification:	The antiserum was purified by peptide affinity chromatography using SulfoLink™ Coupling Resin (Thermo Fisher Scientific).

Target Details

Target:	Ghrelin (GHRL)
---------	----------------

Target Details

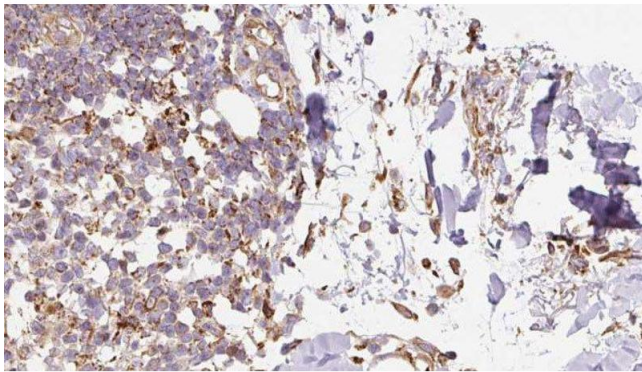
Alternative Name:	GHRL (GHRL Products)
Background:	Description: Ghrelin is the ligand for growth hormone secretagogue receptor type 1 (GHSR). Induces the release of growth hormone from the pituitary. Has an appetite-stimulating effect, induces adiposity and stimulates gastric acid secretion. Involved in growth regulation. Gene: GHRL
Molecular Weight:	13kDa
Gene ID:	51738
UniProt:	Q9UBU3
Pathways:	Positive Regulation of Peptide Hormone Secretion , Hormone Transport , Peptide Hormone Metabolism , Negative Regulation of Hormone Secretion , Synaptic Membrane , Feeding Behaviour

Application Details

Application Notes:	WB 1:500-1:2000, IHC 1:50-1:200, ELISA(peptide) 1:20000-1:40000
Restrictions:	For Research Use only

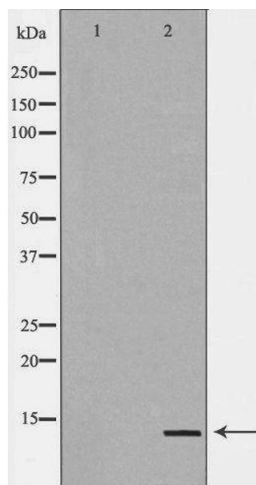
Handling

Format:	Liquid
Concentration:	1 mg/mL
Buffer:	Rabbit IgG in phosphate buffered saline , pH 7.4, 150 mM NaCl, 0.02 % sodium azide and 50 % glycerol.
Preservative:	Sodium azide
Precaution of Use:	This product contains Sodium azide: a POISONOUS AND HAZARDOUS SUBSTANCE which should be handled by trained staff only.
Storage:	-20 °C
Storage Comment:	Store at -20 °C. Stable for 12 months from date of receipt.
Expiry Date:	12 months



Immunohistochemistry

Image 1. ABIN6276656 at 1/100 staining Human Melanoma tissue by IHC-P. The sample was formaldehyde fixed and a heat mediated antigen retrieval step in citrate buffer was performed. The sample was then blocked and incubated with the antibody for 1.5 hours at 22°C. An HRP conjugated goat anti-rabbit antibody was used as the secondary



Western Blotting

Image 2. Western blot analysis of extracts of HeLa, using GHRL antibody. The lane on the left is treated with the antigen-specific peptide.