

Datasheet for ABIN6261975  
**anti-GLIS3 antibody (Internal Region)**



[Go to Product page](#)

1 Image

## Overview

Quantity:	100 µL
Target:	GLIS3
Binding Specificity:	Internal Region
Reactivity:	Human
Host:	Rabbit
Clonality:	Polyclonal
Conjugate:	This GLIS3 antibody is un-conjugated
Application:	Western Blotting (WB), ELISA, Immunofluorescence (IF), Immunocytochemistry (ICC)

## Product Details

Immunogen:	A synthesized peptide derived from human GLIS3, corresponding to a region within the internal amino acids.
Isotype:	IgG
Specificity:	GLIS3 Antibody detects endogenous levels of total GLIS3.
Predicted Reactivity:	Pig,Horse,Sheep,Rabbit,Dog
Purification:	The antiserum was purified by peptide affinity chromatography using SulfoLink™ Coupling Resin (Thermo Fisher Scientific).

## Target Details

Target:	GLIS3
---------	-------

## Target Details

---

Alternative Name:	GLIS3 ( <a href="#">GLIS3 Products</a> )
Background:	Description: Acts as both a repressor and activator of transcription. Binds to the consensus sequence 5'-GACCACCCAC-3' (By similarity). Gene: GLIS3
Molecular Weight:	84 kDa
Gene ID:	169792
UniProt:	<a href="#">Q8NEA6</a>

## Application Details

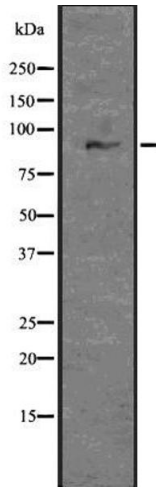
---

Application Notes:	WB 1:1000-3000, IF/ICC 1:100-1:500, ELISA(peptide) 1:20000-1:40000
Restrictions:	For Research Use only

## Handling

---

Format:	Liquid
Concentration:	1 mg/mL
Buffer:	Rabbit IgG in phosphate buffered saline , pH 7.4, 150 mM NaCl, 0.02 % sodium azide and 50 % glycerol.
Preservative:	Sodium azide
Precaution of Use:	This product contains Sodium azide: a POISONOUS AND HAZARDOUS SUBSTANCE which should be handled by trained staff only.
Storage:	-20 °C
Storage Comment:	Store at -20 °C. Stable for 12 months from date of receipt.
Expiry Date:	12 months



### Western Blotting

**Image 1.** Western blot analysis of GLIS3 using Jurkat whole lysates.