

Datasheet for ABIN6261988

anti-Metabotropic Glutamate Receptor 3 antibody (C-Term)[Go to Product page](#)**2** Images

Overview

Quantity:	100 µL
Target:	Metabotropic Glutamate Receptor 3 (GRM3)
Binding Specificity:	C-Term
Reactivity:	Human, Mouse, Rat
Host:	Rabbit
Clonality:	Polyclonal
Conjugate:	This Metabotropic Glutamate Receptor 3 antibody is un-conjugated
Application:	Western Blotting (WB), ELISA, Immunohistochemistry (IHC)

Product Details

Immunogen:	A synthesized peptide derived from human GluR2/3, corresponding to a region within C-terminal amino acids.
Isotype:	IgG
Specificity:	GluR2/3 Antibody detects endogenous levels of total GluR2/3.
Predicted Reactivity:	Zebrafish,Bovine,Horse,Sheep,Rabbit,Dog,Chicken,Xenopus
Purification:	The antiserum was purified by peptide affinity chromatography using SulfoLink™ Coupling Resin (Thermo Fisher Scientific).

Target Details

Target:	Metabotropic Glutamate Receptor 3 (GRM3)
---------	--

Target Details

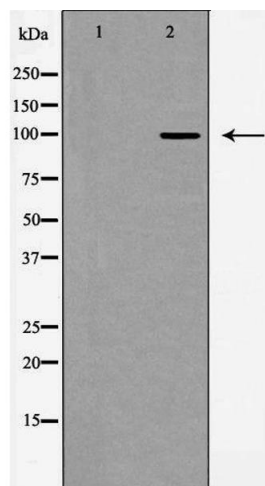
Alternative Name:	GRM3 (GRM3 Products)
Background:	Description: G-protein coupled receptor for glutamate. Ligand binding causes a conformation change that triggers signaling via guanine nucleotide-binding proteins (G proteins) and modulates the activity of down-stream effectors. Signaling inhibits adenylate cyclase activity. Gene: GRM3
Molecular Weight:	100 kDa
Gene ID:	2913
UniProt:	Q14832
Pathways:	cAMP Metabolic Process , Synaptic Membrane

Application Details

Application Notes:	WB 1:500-1:2000, IHC 1:50-1:200, ELISA(peptide) 1:20000-1:40000
Restrictions:	For Research Use only

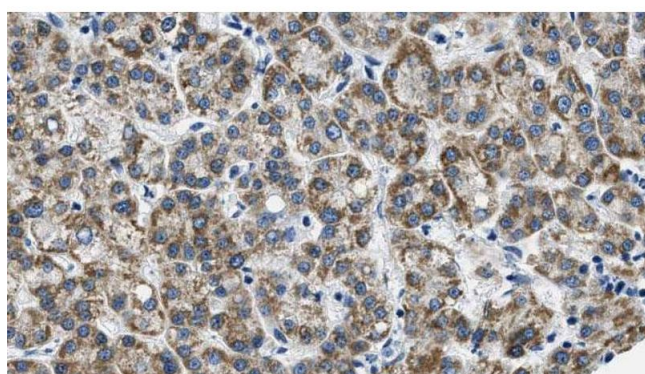
Handling

Format:	Liquid
Concentration:	1 mg/mL
Buffer:	Rabbit IgG in phosphate buffered saline , pH 7.4, 150 mM NaCl, 0.02 % sodium azide and 50 % glycerol.
Preservative:	Sodium azide
Precaution of Use:	This product contains Sodium azide: a POISONOUS AND HAZARDOUS SUBSTANCE which should be handled by trained staff only.
Storage:	-20 °C
Storage Comment:	Store at -20 °C. Stable for 12 months from date of receipt.
Expiry Date:	12 months



Western Blotting

Image 1. Western blot analysis of GluR2/3 expression in mouse brain. The lane on the left is treated with the antigen-specific peptide.



Immunohistochemistry

Image 2. ABIN6269004 at 1/100 staining Human liver cancer tissue by IHC-P. The sample was formaldehyde fixed and a heat mediated antigen retrieval step in citrate buffer was performed. The sample was then blocked and incubated with the antibody for 1.5 hours at 22°C. An HRP conjugated goat anti-rabbit antibody was used as the secondary.