

Datasheet for ABIN6261989

anti-Metabotropic Glutamate Receptor 4 antibody (C-Term)[Go to Product page](#)

4 Images

Overview

Quantity:	100 µL
Target:	Metabotropic Glutamate Receptor 4 (GRM4)
Binding Specificity:	C-Term
Reactivity:	Human, Mouse, Rat
Host:	Rabbit
Clonality:	Polyclonal
Conjugate:	This Metabotropic Glutamate Receptor 4 antibody is un-conjugated
Application:	Western Blotting (WB), Immunohistochemistry (IHC), ELISA, Immunofluorescence (IF), Immunocytochemistry (ICC)

Product Details

Immunogen:	A synthesized peptide derived from human mGluR4, corresponding to a region within C-terminal amino acids.
Isotype:	IgG
Specificity:	mGluR4 Antibody detects endogenous levels of total mGluR4.
Predicted Reactivity:	Horse,Rabbit,Dog,Chicken
Purification:	The antiserum was purified by peptide affinity chromatography using SulfoLink™ Coupling Resin (Thermo Fisher Scientific).

Target Details

Target:	Metabotropic Glutamate Receptor 4 (GRM4)
---------	--

Target Details

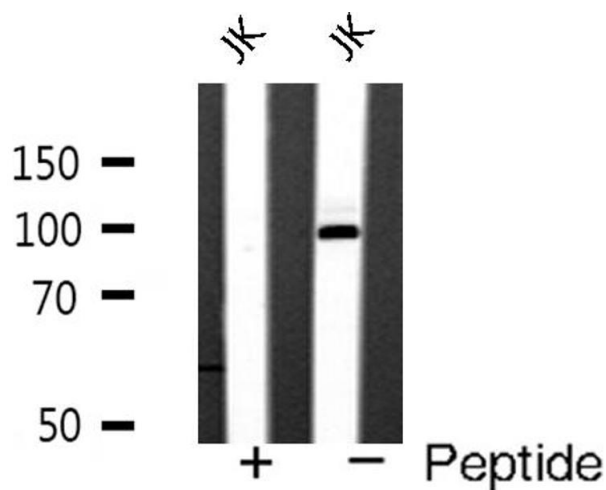
Alternative Name:	GRM4 (GRM4 Products)
Background:	Description: G-protein coupled receptor for glutamate. Ligand binding causes a conformation change that triggers signaling via guanine nucleotide-binding proteins (G proteins) and modulates the activity of down-stream effectors. Signaling inhibits adenylate cyclase activity. Gene: GRM4
Molecular Weight:	98 kDa
Gene ID:	2914
UniProt:	Q14833

Application Details

Application Notes:	WB 1:500-1:2000, IHC 1:50-1:200, IF/ICC 1:100-1:500, ELISA(peptide) 1:20000-1:40000
Restrictions:	For Research Use only

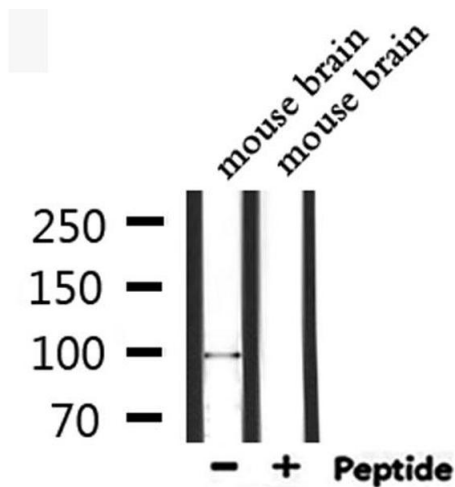
Handling

Format:	Liquid
Concentration:	1 mg/mL
Buffer:	Rabbit IgG in phosphate buffered saline , pH 7.4, 150 mM NaCl, 0.02 % sodium azide and 50 % glycerol.
Preservative:	Sodium azide
Precaution of Use:	This product contains Sodium azide: a POISONOUS AND HAZARDOUS SUBSTANCE which should be handled by trained staff only.
Storage:	-20 °C
Storage Comment:	Store at -20 °C. Stable for 12 months from date of receipt.
Expiry Date:	12 months



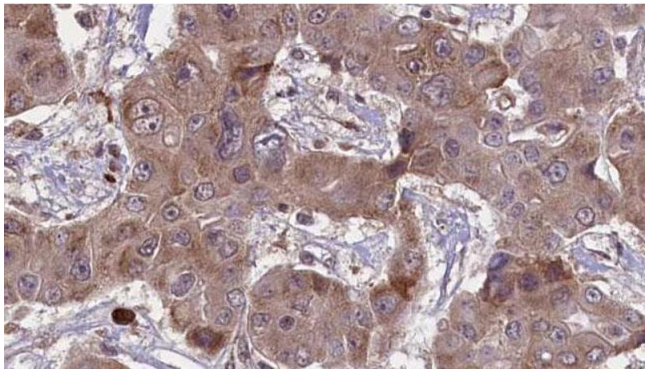
Western Blotting

Image 1. Western blot analysis of GluR4 expression in JK cells



Western Blotting

Image 2. Western blot analysis of extracts from mouse brain, using GluR4 Antibody.



Immunohistochemistry

Image 3. ABIN6269005 at 1/100 staining Human liver cancer tissue by IHC-P. The sample was formaldehyde fixed and a heat mediated antigen retrieval step in citrate buffer was performed. The sample was then blocked and incubated with the antibody for 1.5 hours at 22°C. An HRP conjugated goat anti-rabbit antibody was used as the secondary.

Please check the [product details page](#) for more images. Overall 4 images are available for ABIN6261989.